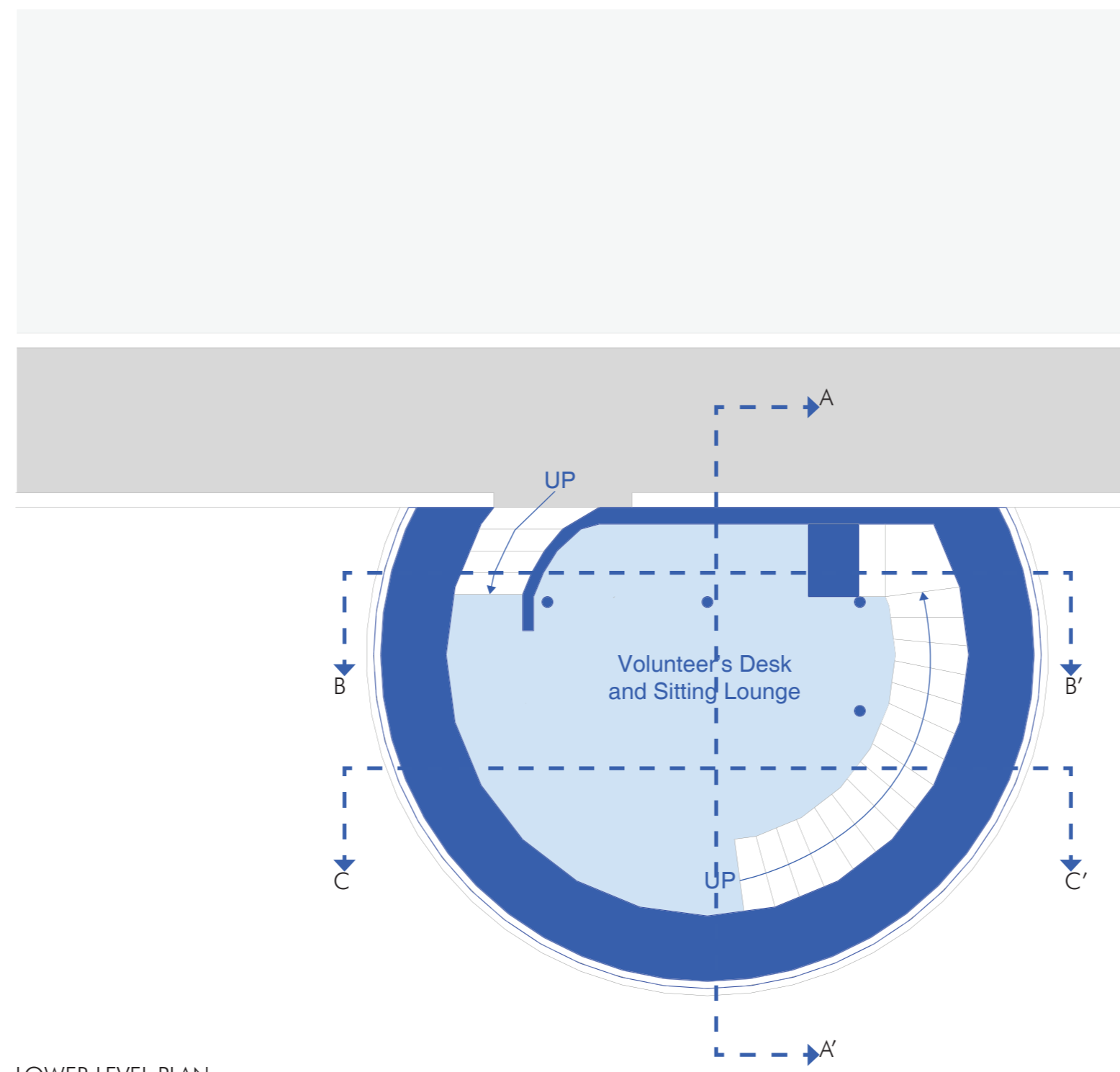


MANEK BURJ INTERPRETATION CENTRE

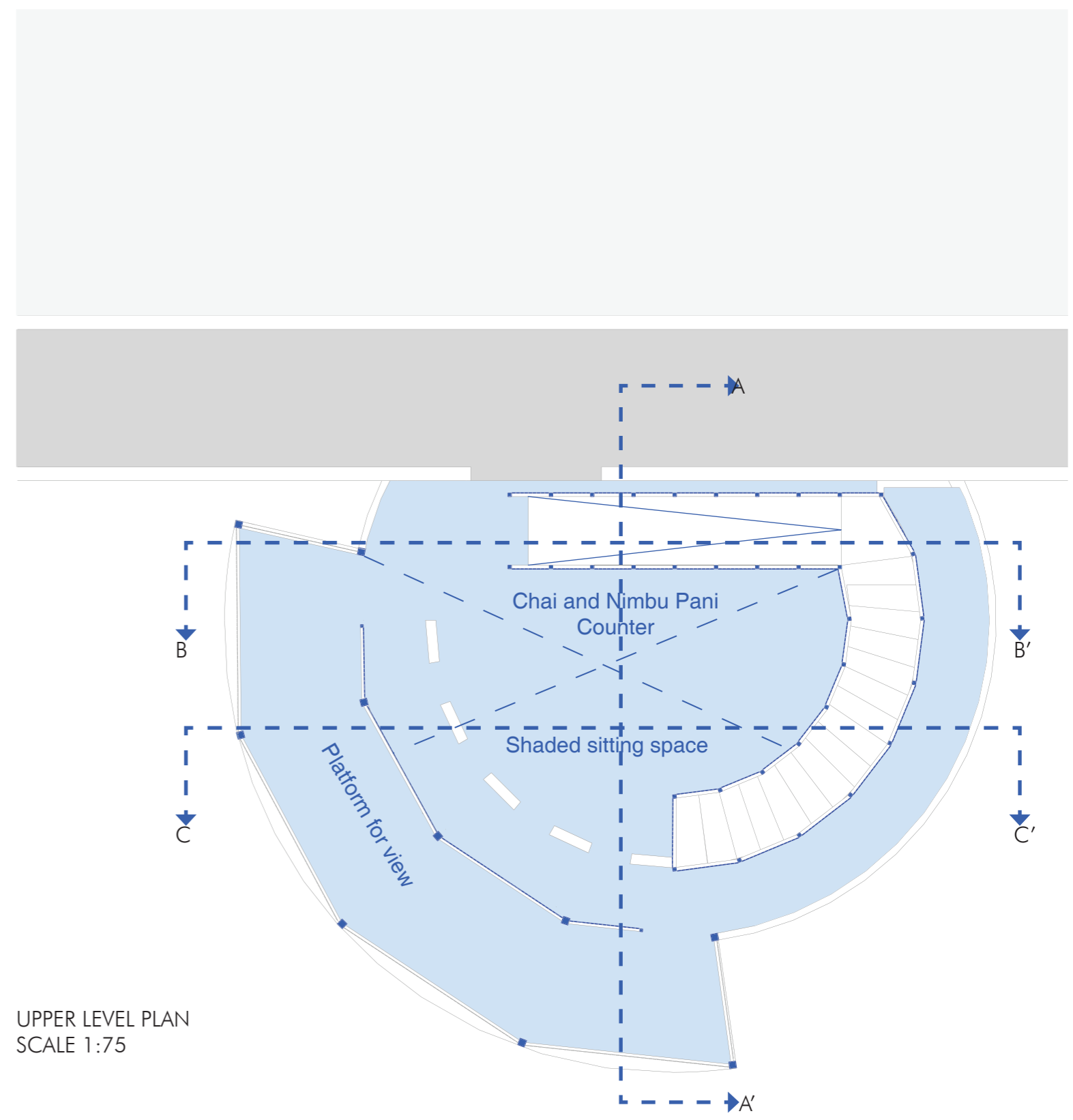
THE CHARACTER OF MANEK BURJ IS SUCH THAT IT IS VERY RIGID AND CLOSED WHICH SEPERATES THE BURJ FROM THE OTHERS, THIS COULD BE ONE OF THE PRIME REASONS WHY THE MANEK BURJ IS OFTEN NEGLECTED. IT SET APARTS ITSELF AS SOMETHING WHICH IS UNTOUCHABLE, WHICH VERY WELL RESULTS IN THE NEGLIGENCE OF ITS HERITAGE AND HISTORY.

SO THE IDEA WAS TO BREAK THIS RIGIDITY OF THE BURJ AND MAKE IT OPEN TO PEOPLE. THE DESIGN AIM WAS TO CONNECT THE USERS TO THE BURJ THROUGH THE EXPERIENCE OF ITS HISTORY, BURRIED IN ITS LAYERS.

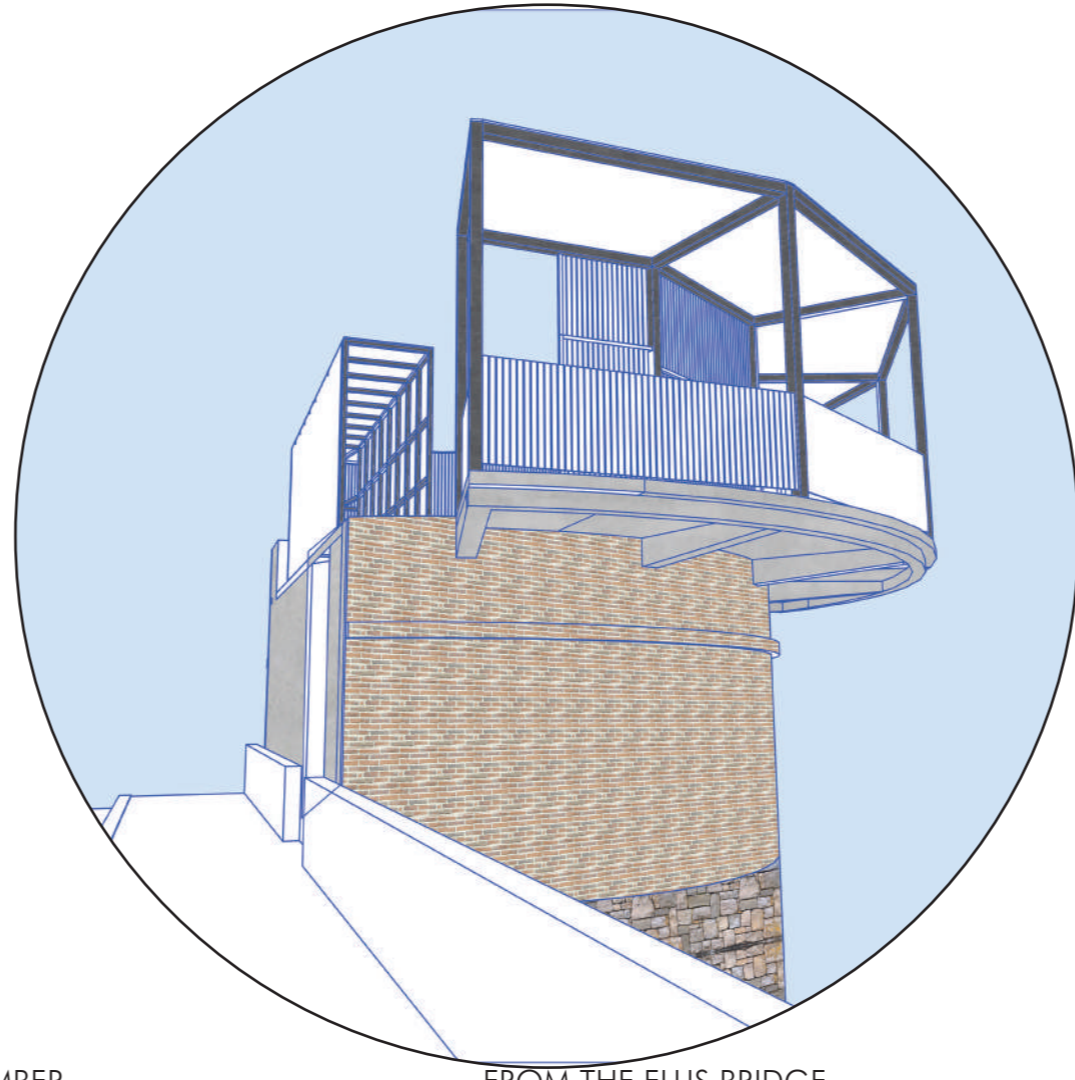
THE IDEA IS TO BREAK THE CURRENT STAIRCASE AND SLAB AND CREATE AN ENCLOSED SPACE WHICH WILL HAVE THE INFORMATION DESK AND LOUNGE AREA SO THAT VISITORS CAN EXPERIENCE THE ROUGHNESS AND HISITORY OF THE BURJ. BY CREATING A SERIES OF FLIGHTS ACROSS THE PERIPHERY OF THE BURJ THE IDEA WAS TO CREATE TO TRANSITION FROM OLD TO NEW FOR THE VISITORS AS THEY REACH THE PLATFORM FOR THE PANAROMIC VIEW OF THE CITY, ACCOMPANIED BY A COURTYARD WHICH CAN BE USED AS A SPACE FOR SITTING AND HAVING A CUP OF CHAI / NIMBUPANI.



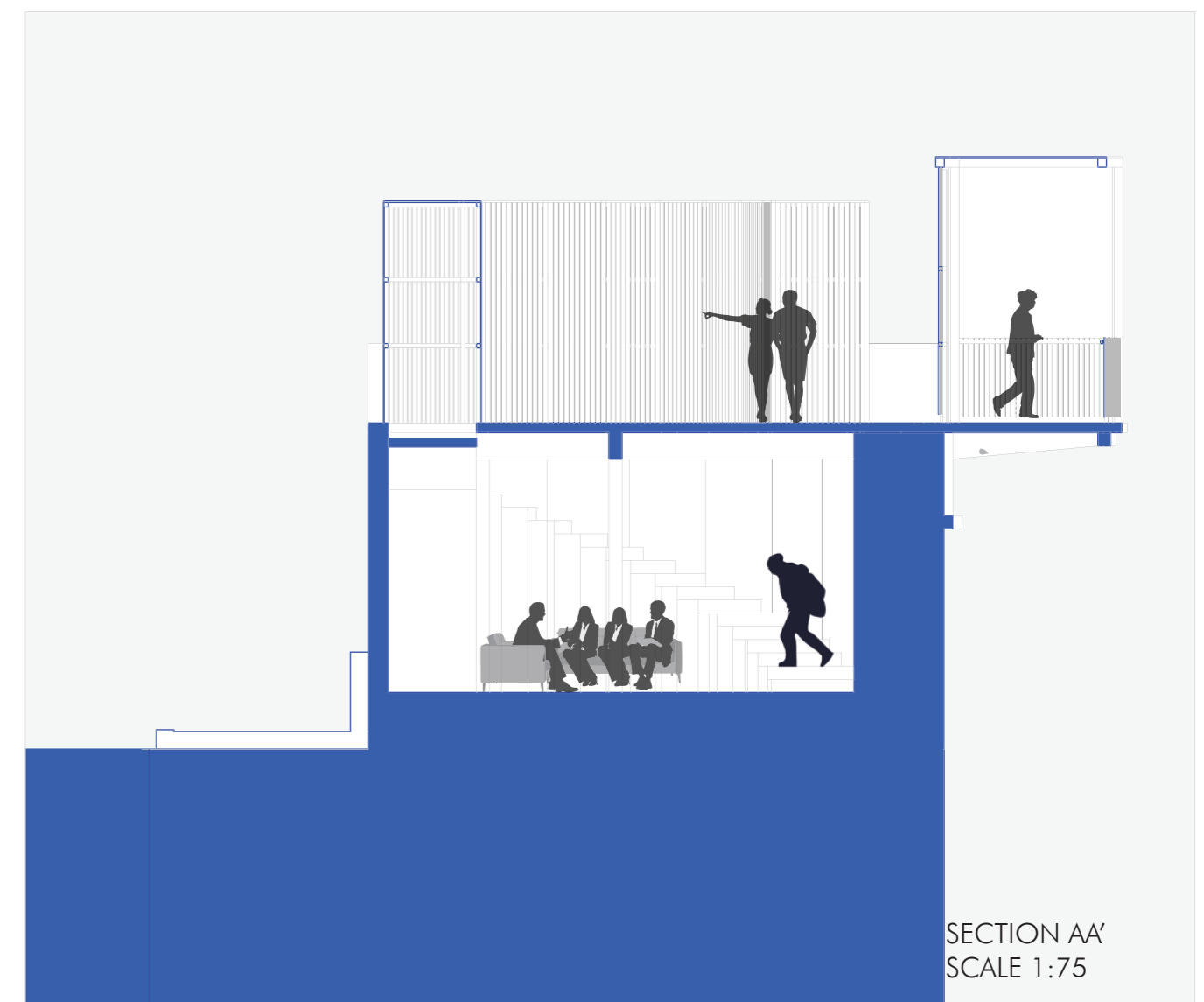
LOWER LEVEL PLAN
SCALE 1:75



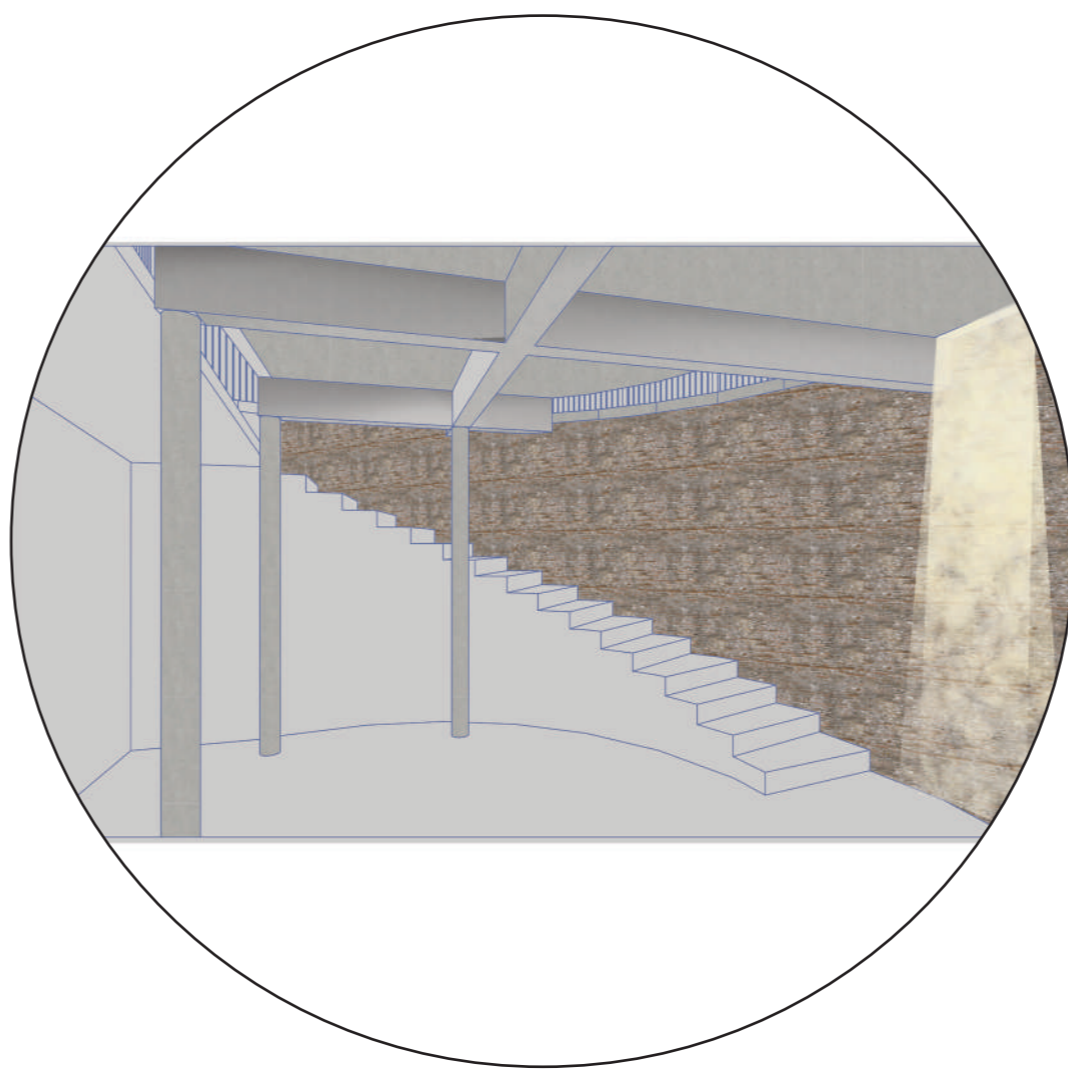
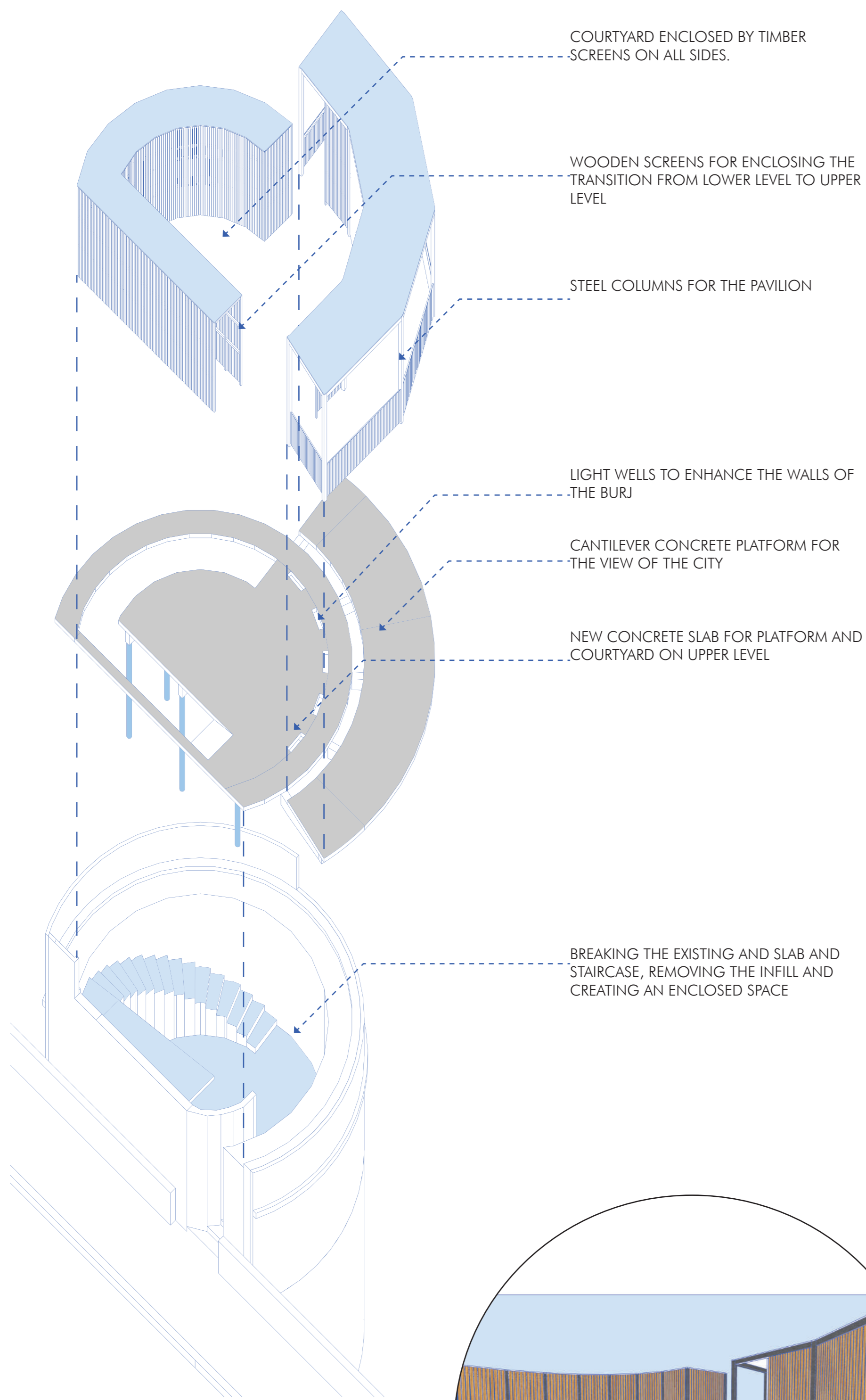
UPPER LEVEL PLAN
SCALE 1:75



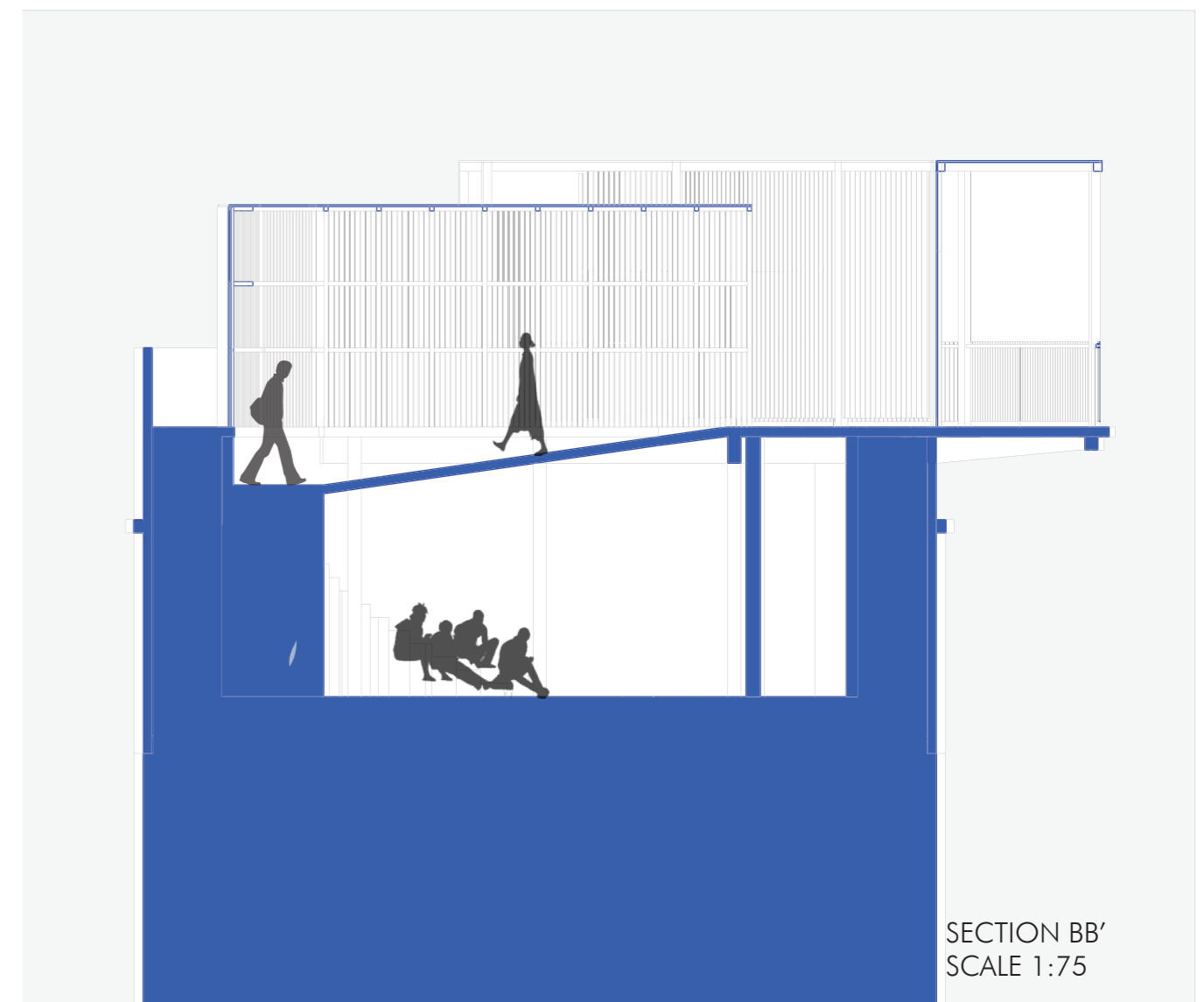
FROM THE ELLIS BRIDGE
HIGHLIGHTING HOW THE OLD AND NEW
COME TOGETHER.
HOW THE NEW PLATFORM IS SITTING ON
THE BURJ.



SECTION AA'
SCALE 1:75



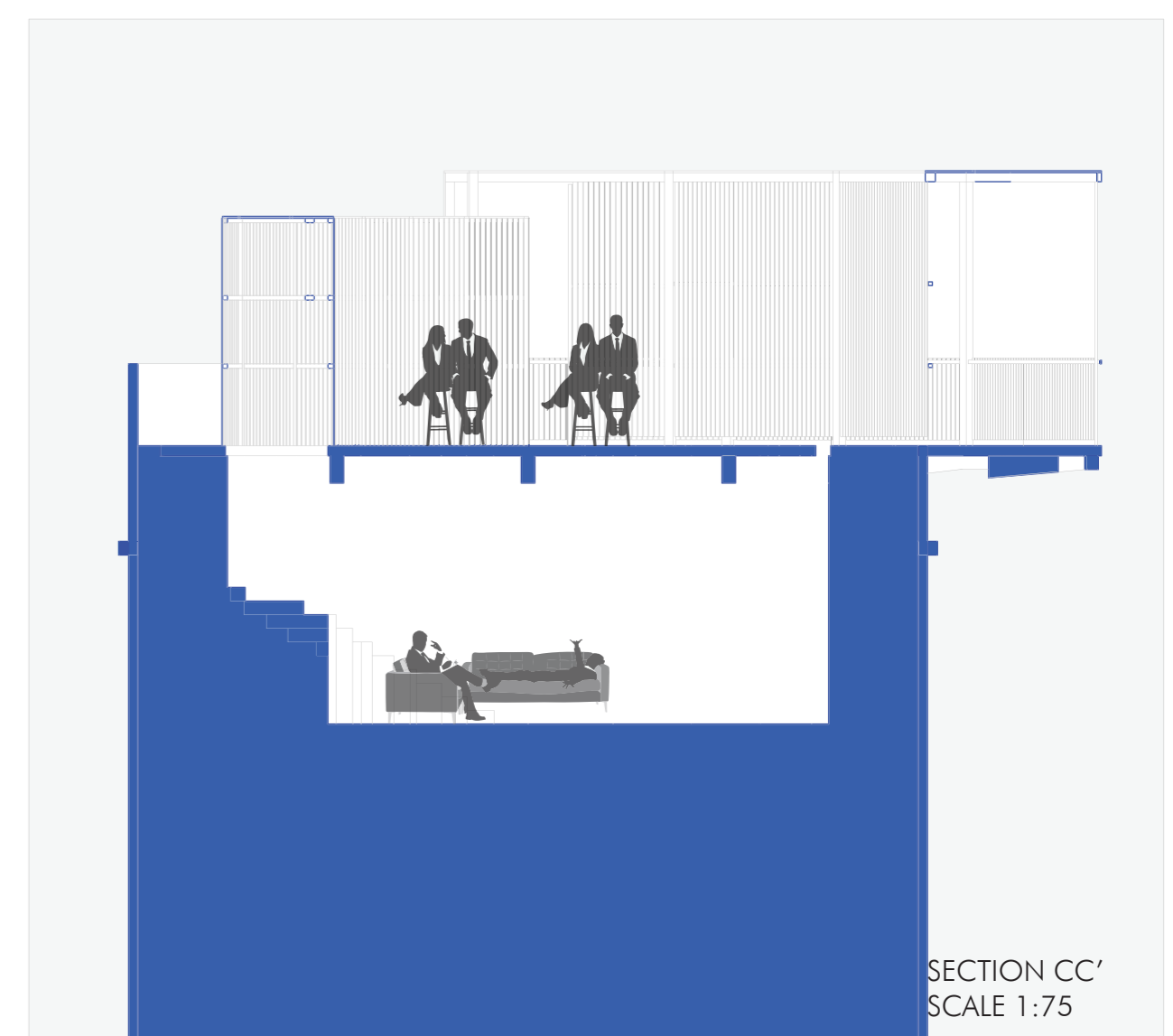
THE INFORMATION DESK INSIDE THE
MANEK BURJ.
EXPERIENCING THE BURJ WHILE TRANSI-
TIONING UPWARDS



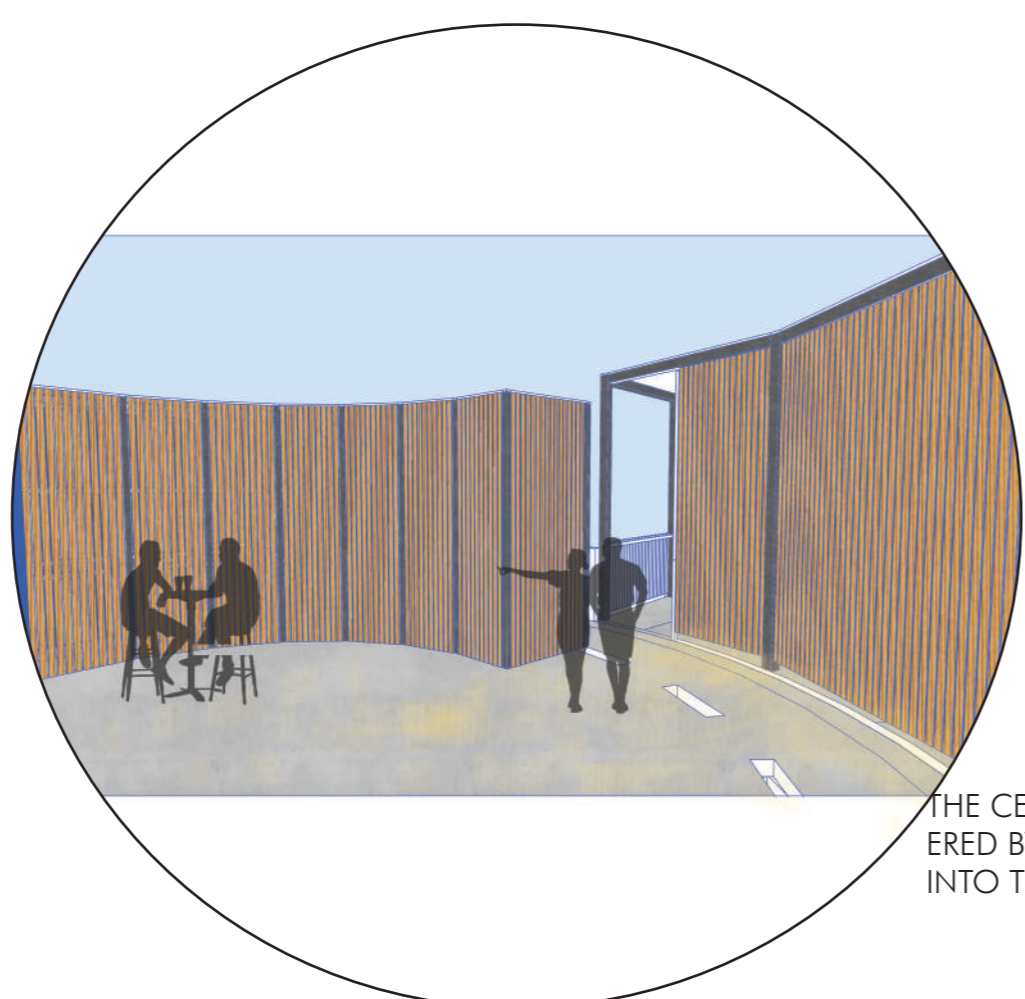
SECTION BB'
SCALE 1:75



THE TRANSITION RAMP WHICH SHADED BY
A PORUS LAYER OF WOODEN STRIPS, TO
GIVE GLIMPSES OF WHAT WILL HAPPEN.



SECTION CC'
SCALE 1:75



THE CENTRAL COURTYARD WHICH IS COV-
ERED BY SCREENS ON ALL SIDES , OPENS
INTO THE PLATFORM.