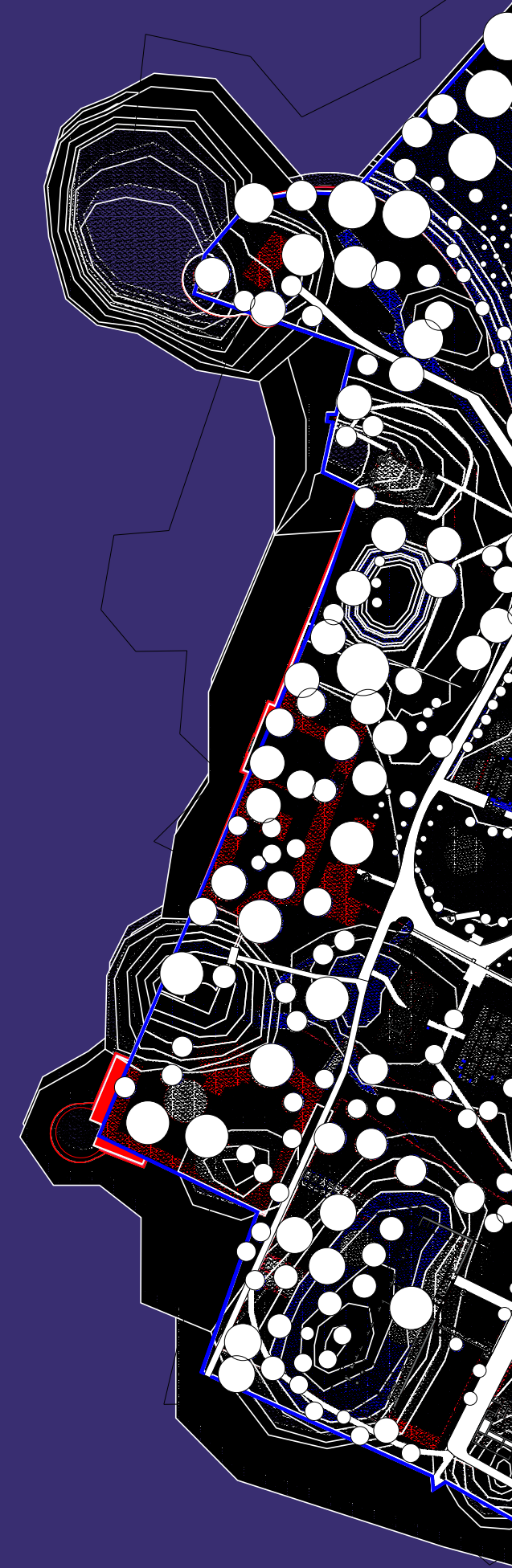


MASTER'S IN
CONSERVATION AND REGENERATION (MCR)

Faculty of Architecture

WEBINAR 2026





ABOUT MCR

Note from the Program Chair

The two-year MCR program situates conservation studies within the discourses of ecology, science and the global economy”, rejecting the boundaries implied by nationalism and religion. At MCR, architectural and urban conservation is a progressive professional practice undertaking intellectual and design challenges crucial for making historical built environments suitable to contemporary society; supported by archival and material evidence, emerging technologies, and policy tools.

The current Indian context is extremely favorable for conservation profession with growing interest and investment from CSRs, municipal corporations, Ministry of Tourism, Ministry of Housing Affairs, and others. The MCR curriculum acknowledges the growing industry and emphasizes aesthetics of repair, technical knowledge of integrating services into historic structures, sensitivity to user experience, fluency with contemporary materials, and the ability to develop and advocate for innovative solutions while addressing challenges of historic built environments.

Foregrounding its responsibility to the emerging realities of climate urgency, MCR treats conservation as primarily an ecological act of radical design, allowing for creative and responsible reinterpretations of historical structures which can integrate developmental pressures around. MCR expands its focus from monuments to also include the unlisted, abandoned, and mundane buildings and propose contemporization. This includes projects of extension, aspirational upgradation; service retrofits; and material and structural repairs. Students are trained to move from intuition to informed decision-making processes and roles, to take leadership and advocacy roles, to adapt and innovate artisanal building crafts, to invent ways of upgrading traditional knowledge systems. It promotes effective multidisciplinary collaboration with structural engineers, historians, technocrats, policy makers, housing experts, landscape architects. It is committed to cultivating confidence and responsibility in its graduates as professionals in the field of architectural conservation. MCR graduates are equipped to be confident professionals, ready to take on roles in conservation and architectural offices, provide independent consultancy to private and public sector for conservation, provide research-based solutions to think-tanks, and undertake academic roles.

Sonal Mithal, PhD



PROGRAM VISION

To situate architectural conservation pedagogy within global ecology, global economy, global science outside of the boundaries of nationalism and religion

PROGRAM OBJECTIVES

- Ensure graduates are equipped with academic and professional skills that enable them to make a positive contribution related to the conservation of historic built environments
- Develop knowledge of the theoretical, historical, and professional context of architectural conservation
- Foreground the role of architectural conservation in the modern ecological agenda
- Promote an awareness of traditional building crafts as a valuable cultural resource
- Promote multidisciplinary collaboration and interaction with a wide range of professional bodies and individuals related to built environment
- Ensure graduates cultivate confidence and an awareness of their responsibility as consultants in the field of architectural conservation
- Encourage reading of the historic environment as a whole and its use as an educational resource
- Provide teaching informed by research and practice.



WHY STUDY CONSERVATION

Conservation is an **ECOLOGICAL** act

Conservation is becoming mainstream due to **EXCESS** of existing built form which requires recycling/retrofit **DESIGN**

Every built form requires maintenance, upgradation, alteration

Conservation responds to Climate Change

RESEARCH-BASED DESIGN

Historic built forms are complex to intervene responsibly and creatively

PROGRAM STRUCTURE

MCR offers a teaching environment informed by research and practice. The curriculum is structured in studios, lab and site-based courses, reading and writing courses, and skill-development workshops. It acknowledges the advent of artificial intelligence, and integrates it to imagine future scenarios.

STUDIOS

FOUNDATION

architectural: upskilling, familiarity with reading dilapidated structures, material intervention, seminar, related to theory of conservation, structural understanding

EXTEND REDENSIFY

RETROFIT
urban housing

RETROFIT RESTORE

REPURPOSE
modern historic object

CLIMATE ACTION ECOLOGY

urban

REDEVELOP

urban historic precincts

DIRECTED RESEARCH

PROJECTS
varied

- All studios to have a seminar component for framework of intervention
- All studios to have a writing component--manifesto writing
- All studios to have a charette with a structural engineer / MEP consultants

COURSES

LAB AND SITE BASED

Study of Historic Material Behavior
Survey of Contemporary Materials
Professional Practice--Tendering, SOR, BOQ, Quality Control

READING AND WRITING COURSE

Charters, Conventions, and Legislations
Political Economy of Conservation
Architectural Historiography
Structural Reading of Historic Built Forms
Contemporary Approaches and Practices

SKILL DEVELOPMENT

WORKSHOPS

NDT Tests For Building Evaluation
Crafts workshop
MEP/HVAC in historic structures
Structural Audits for concrete
LIDAR scanning and Photogrammetry
Manual documentation methods



Foundation Semester

Focus: **Architectural**: upskilling drawing-making, working with archives, seminar related to theory of conservation, familiarity with evaluating dilapidated structures, material and structural intervention

Conservation responds to Climate Change

RESEARCH-BASED DESIGN

Historic built forms are complex to intervene responsibly and creatively





Second Semester

Focus: **Extend, redensify, retrofit** a modernist housing or a modernist iconic building offered as a choice. Studios prioritize material specific inquiry using model-making and digital tools, aesthetics of repairs, insertion of contemporary services, integrate barrier-free access requirements, among others





Existing Built form Spatial Retrofits Utility Retrofits Services Retrofits Retrofits for Ventilation Retrofit Walls Earth Concrete Stone Masonry Cracks Algae Spalling Chipping Dampness Plant growth

Third Semester

Focus: Contemporize urban historic precincts to address climate urgency and development pressures. Studio prioritizes urban studies combined with stakeholders consultations, policy awareness, large-scale mappings, to provide design solutions combined with policy proposal



Third Semester

Focus: Contemporize urban historic precincts to address climate urgency and development pressures. Studio prioritizes urban studies combined with stakeholders consultations, policy awareness, large-scale mappings, to provide design solutions combined with policy proposal



Lab and Site Based Courses

Survey and Study of Contemporary Materials

Course on Materials and Structures of Historical Buildings

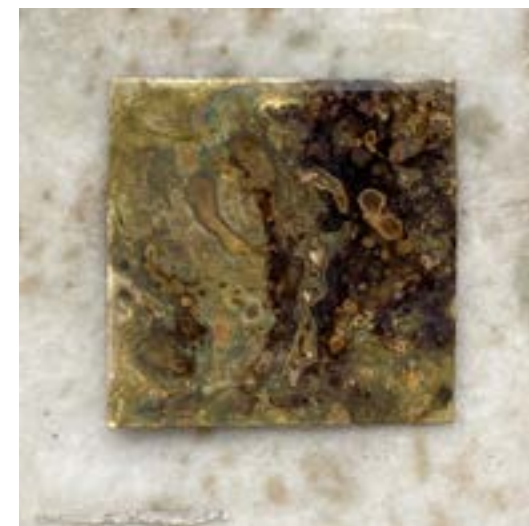
Study of Historic Material Behavior in **Conservation Lab**





Lab and Site Based Courses

Survey and Study of Contemporary Materials
Learning Artisinal Practices from the Craftsmen. Wood, Lime, Glass etc





Reading and writing courses

- Charters, Conventions, and Legislations
- Political Economy of Conservation
- Architectural Historiography
- Structural Reading of Historic Built Forms
- Contemporary Approaches and Practice



Skill development workshops

- NDT Tests For Building Evaluation
- Crafts workshop
- MEP/HVAC in historic structures
- Structural Audits for concrete
- LIDAR scanning and Photogrammetry
- Manual documentation methods



3d LiDar scanning for built heritage
In collaboration with: CHC, CRDF | CEPT University
Conducted by: Mrudula Mane, conservation architect and PhD fellow



Collaborative Workshop

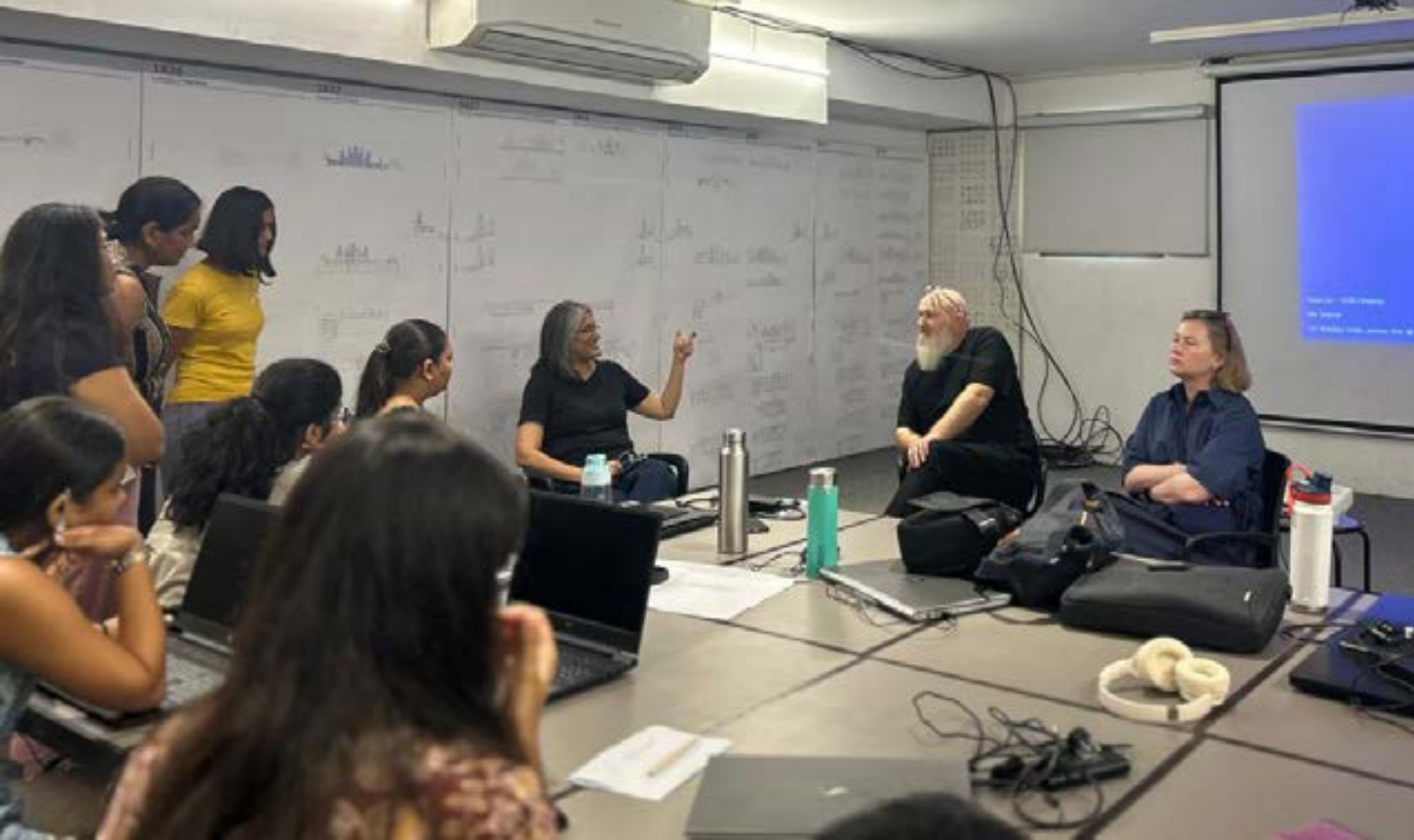


The Winter School “**Catching Winds and Views at Al-Azhar Park, Cairo**” initiated as a collaboration between the **Masters program in Conservation and Regeneration, CEPT University** in collaboration with the **Aga Khan Development Network (AKDN)**. The winter school offered by Dr. Sonal Mithal and Chinmay Gheware involves 15 students from various programs across Faculty of Architecture, CEPT University who will work with 8 students from Cairo University in a charrette to design two boutique hotels at Al-Azhar Park. The goal is to interpret sustaining historic Egyptian architectural practices in contemporary forms and programs.



AGA KHAN TRUST FOR CULTURE
Education Programme

CEPT
UNIVERSITY

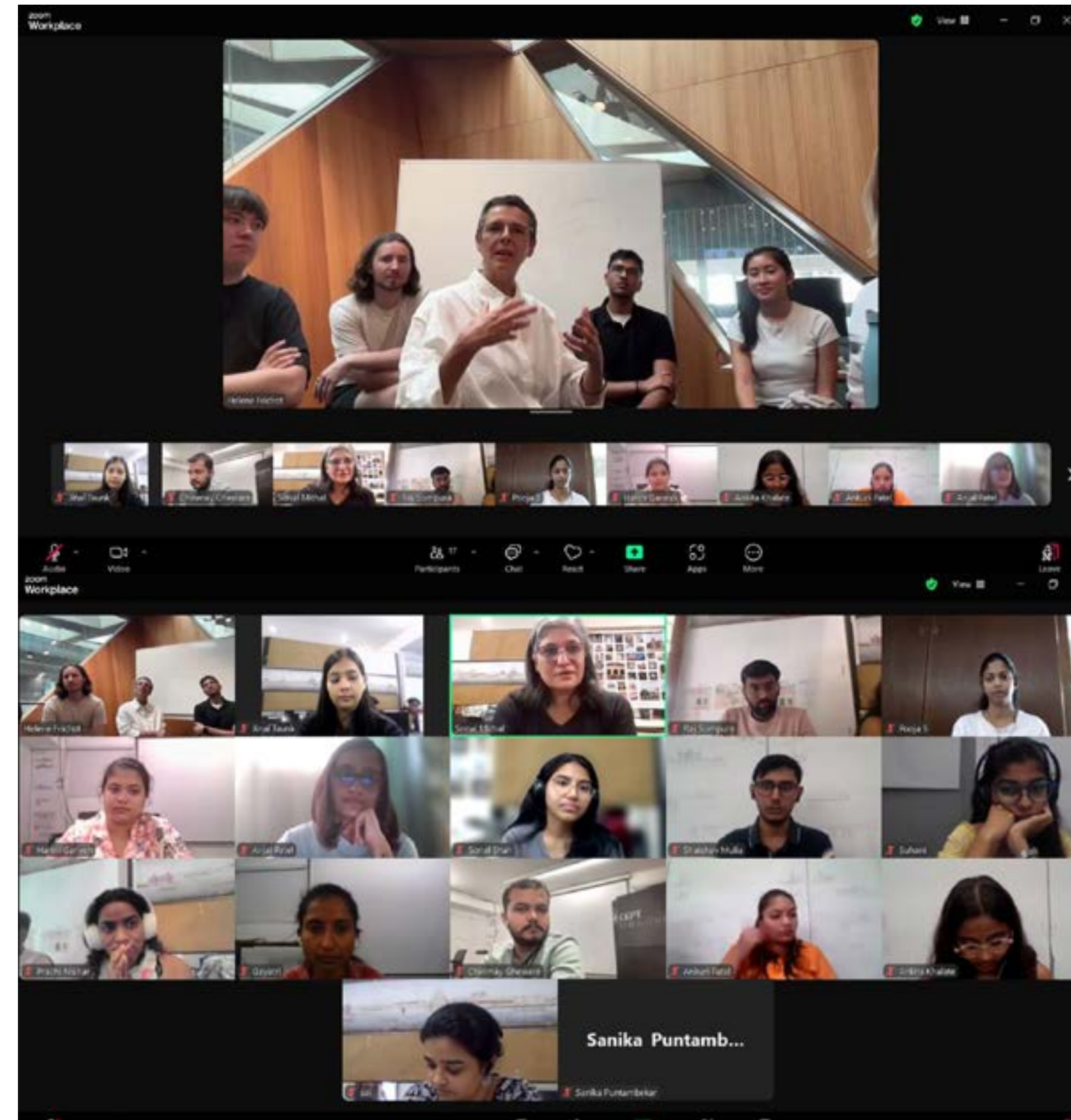


Student-Led discussions on Conservation

Alliance Francaise, 2024

University of Melbourne, 2024

Birmingham City University, 2024





Visit to Conservation Projects

Visit to restoration of Surat Castle, surat by People for Heritage Concern, 2024

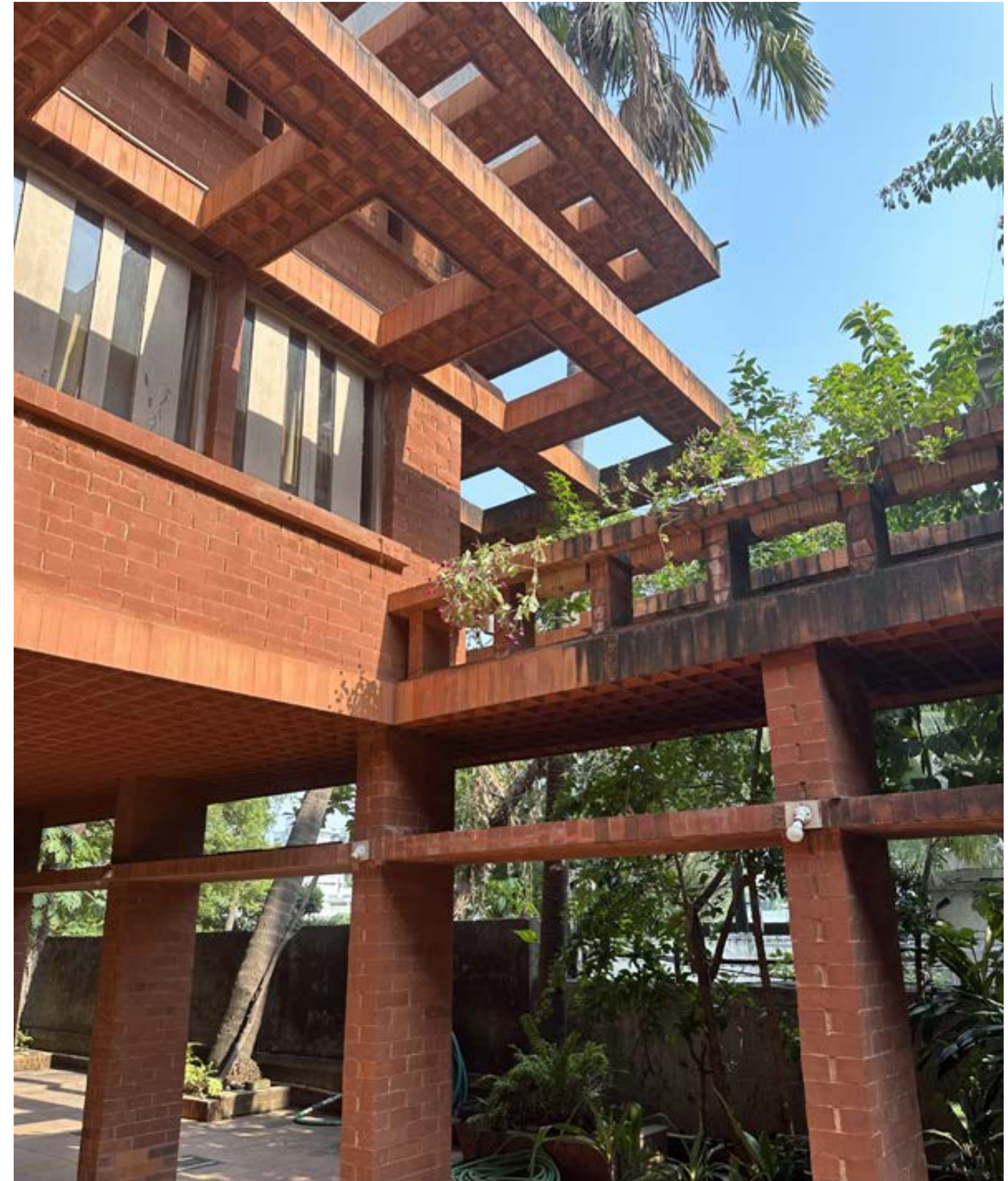
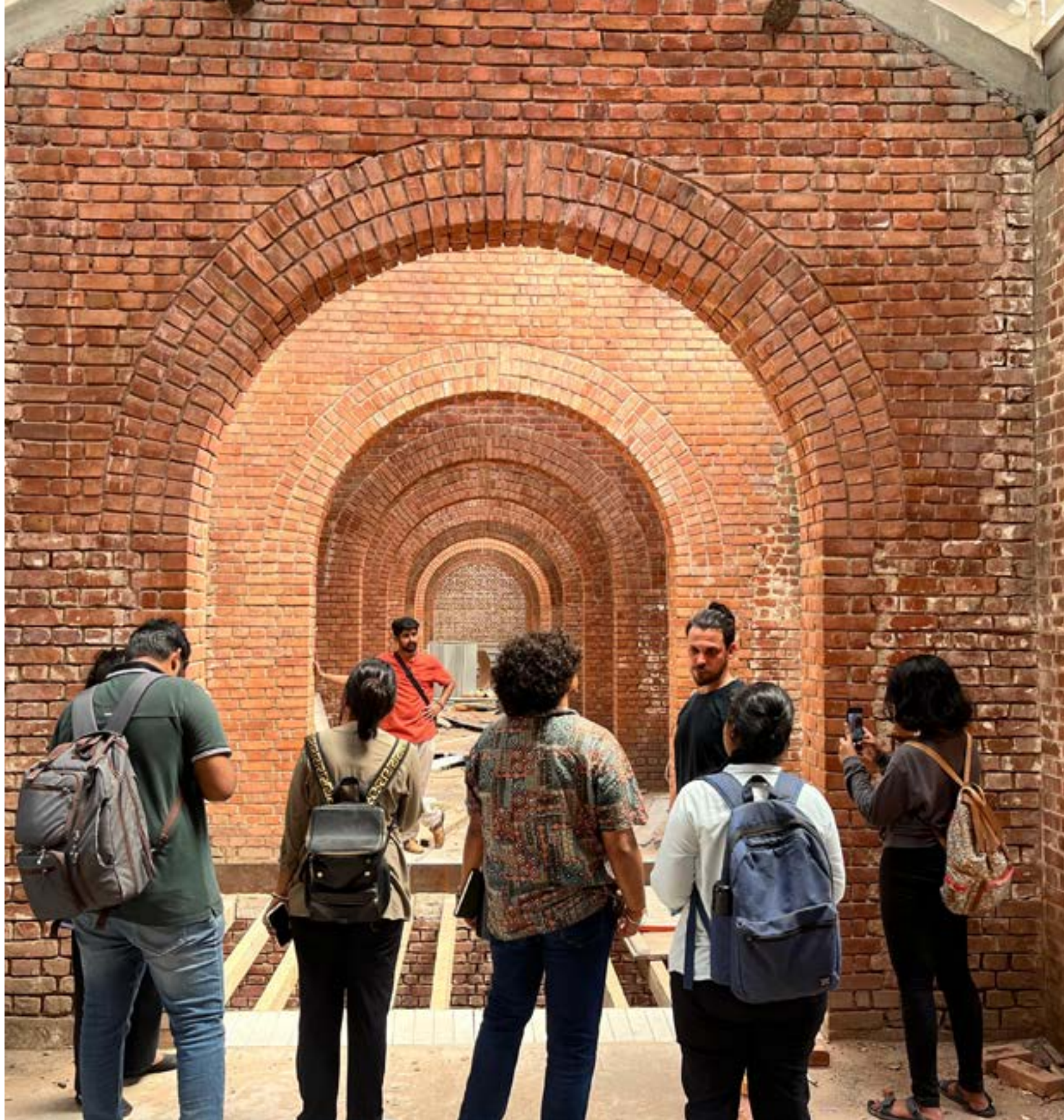
Visit to Kapadvanj On Going Preservation Project organised by CHC, 2025



Visit to Conservation Projects

Visit to Girls innovation Center, Ahmedabad as a part of Mandatory Course, 2025

Visit to Nari Gandhi House extension, Surat by Studio II as a part of Mandatory Course, 2024



MCR AT EXHIBITIONS

CEPT End Term Winter Exhibition | Monsoon 2025

"Modelling Repair Studies" Mid Term Exhibition led by MCR and MHD Students | Spring Semester 2025



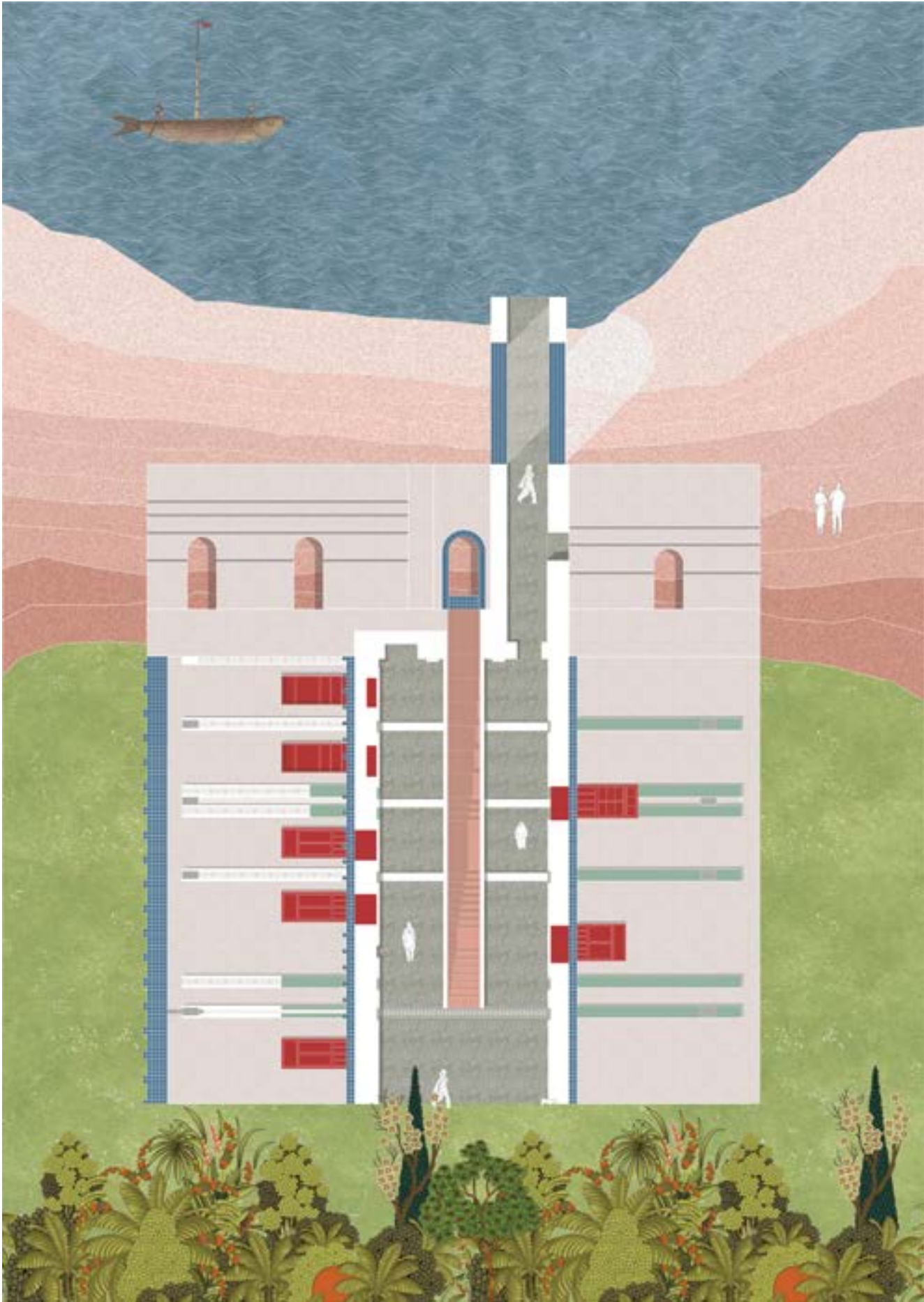
MCR AT EXHIBITIONS

MCR at "Timeless Heritage: Past Forward" Exhibition by Calcutta Heritage Collective, 2024

MCR at "Futures Of Architectural Trajectories" Exhibition by Faculty of Architecture at IFBE, Mumbai 2025



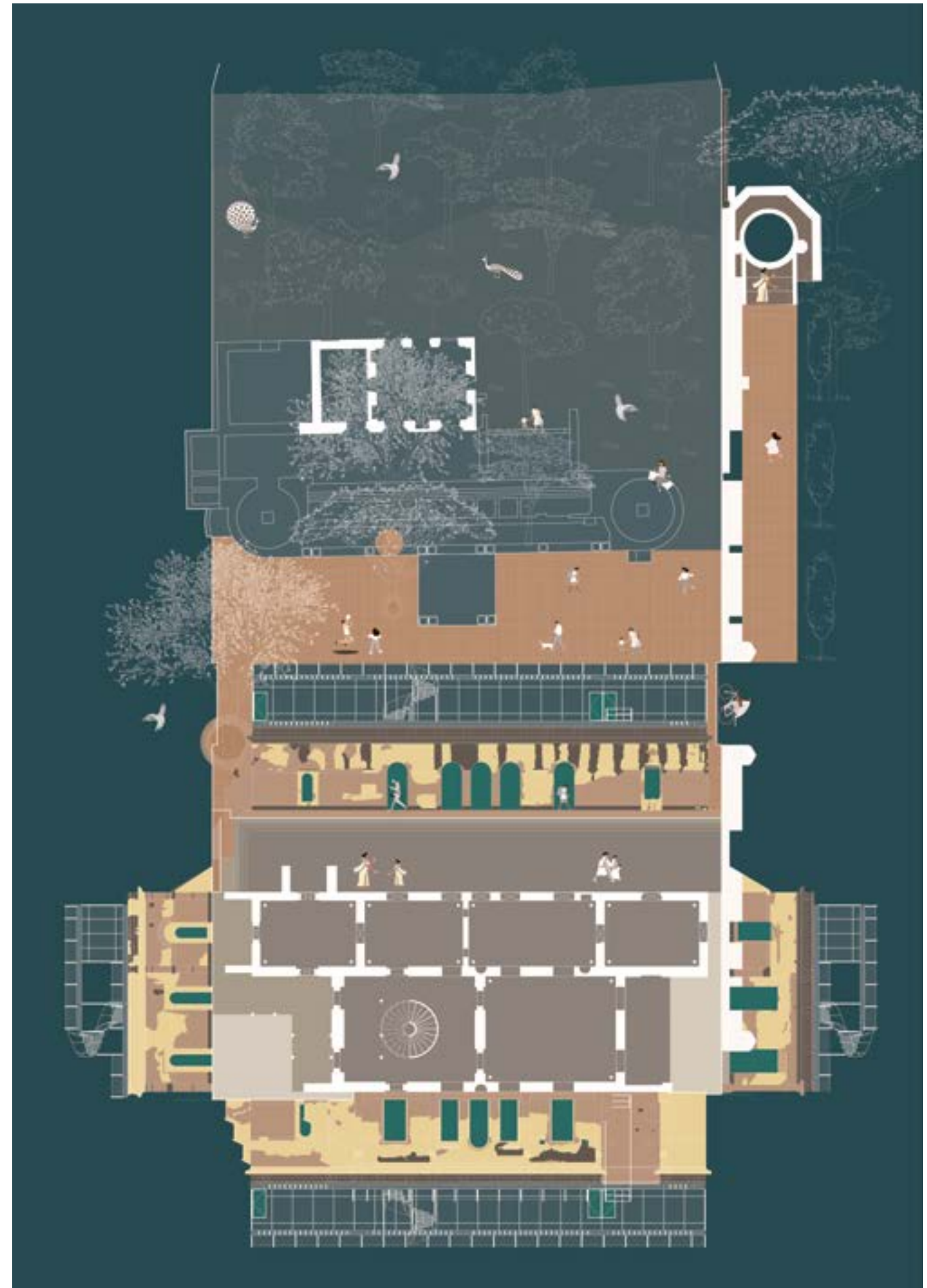
MCR CEPTU STUDENT WORK



Foundation

Planimetry Drawings
CronoCaos and Care M25
Student Intervention

Student Credit
Payal Bhatuda
Shashank Kulkarni



Foundation

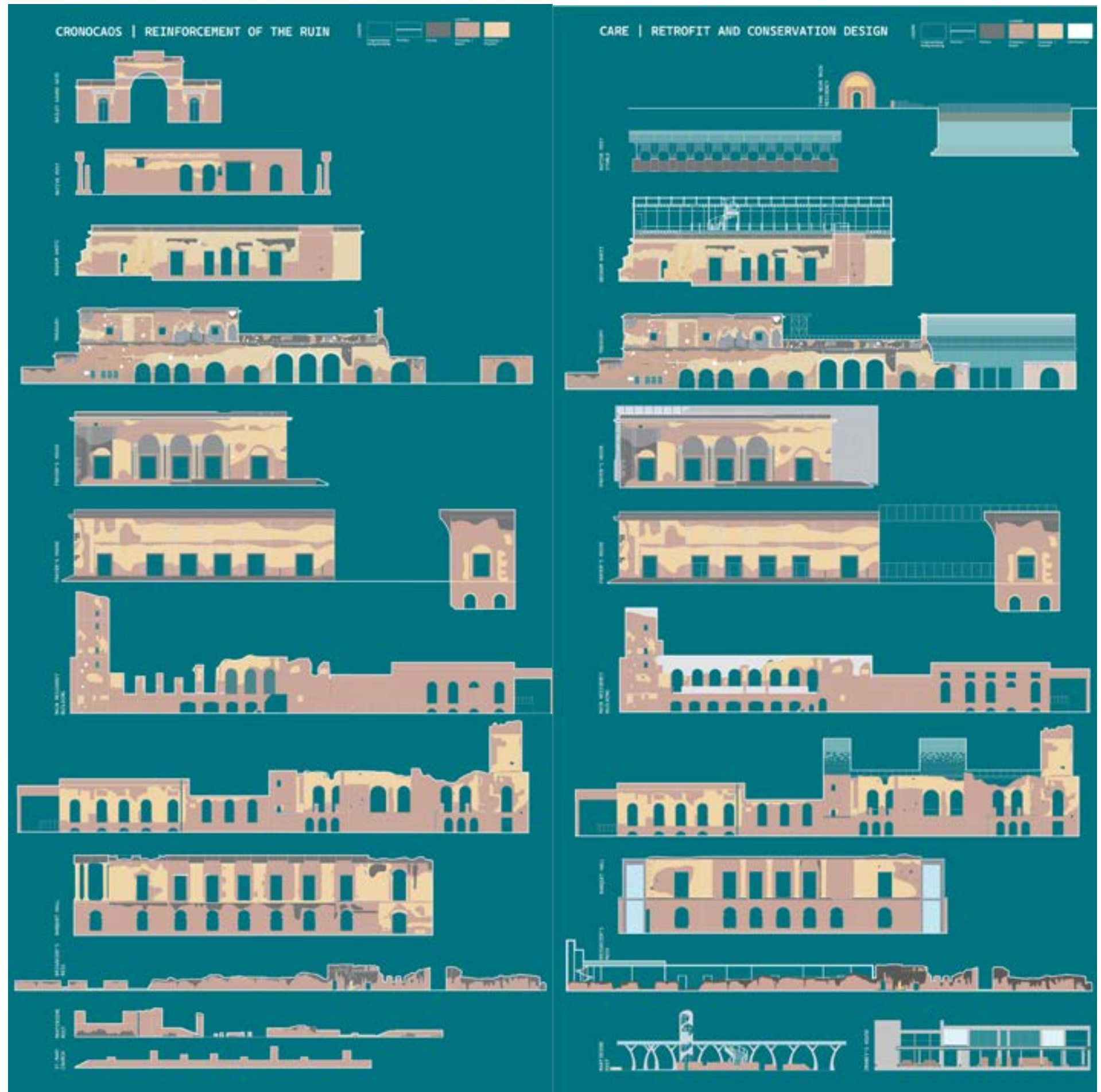
Planimetry Drawings
Cronocaos and Care M25
Student Intervention

Student Credit
Tarun Thakur
Vihaan Murthy



Foundation

Palimpsest | Residency
Cronocaos and Care M25
Group Work

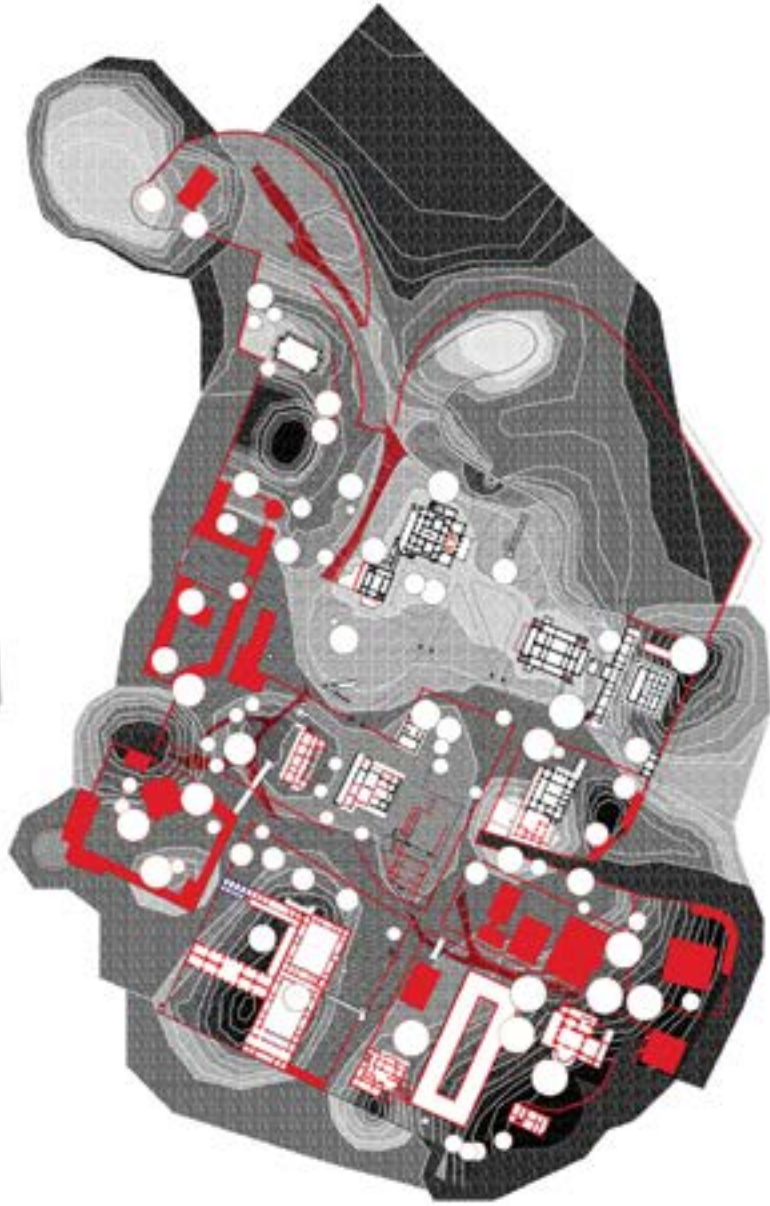
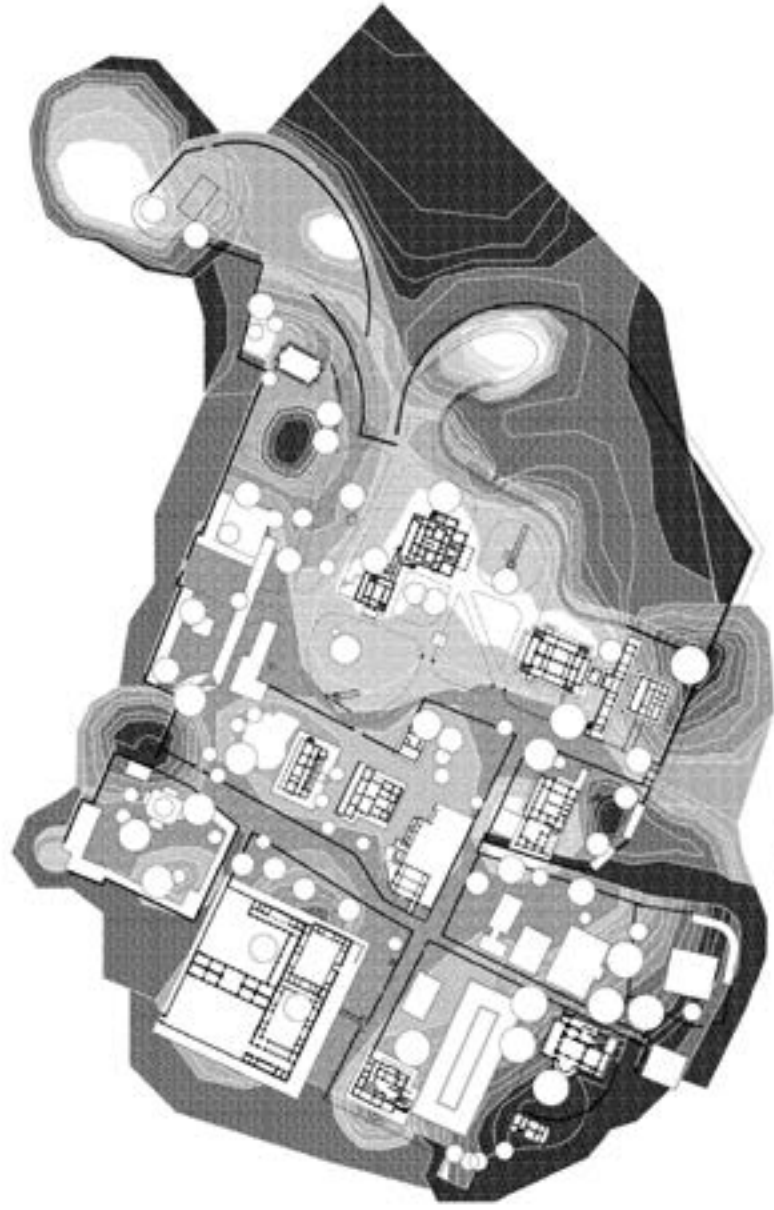


Foundation

Cronos for Residency, Lucknow

CronoCaos and Care M25

Group Work



Before the 1857 War of Independence | Nawab + British East India Company

During/After the 1857 War of Independence | Indian Soldiers + British Military

Production of the Ruin | British Military + ASI (British Raj)

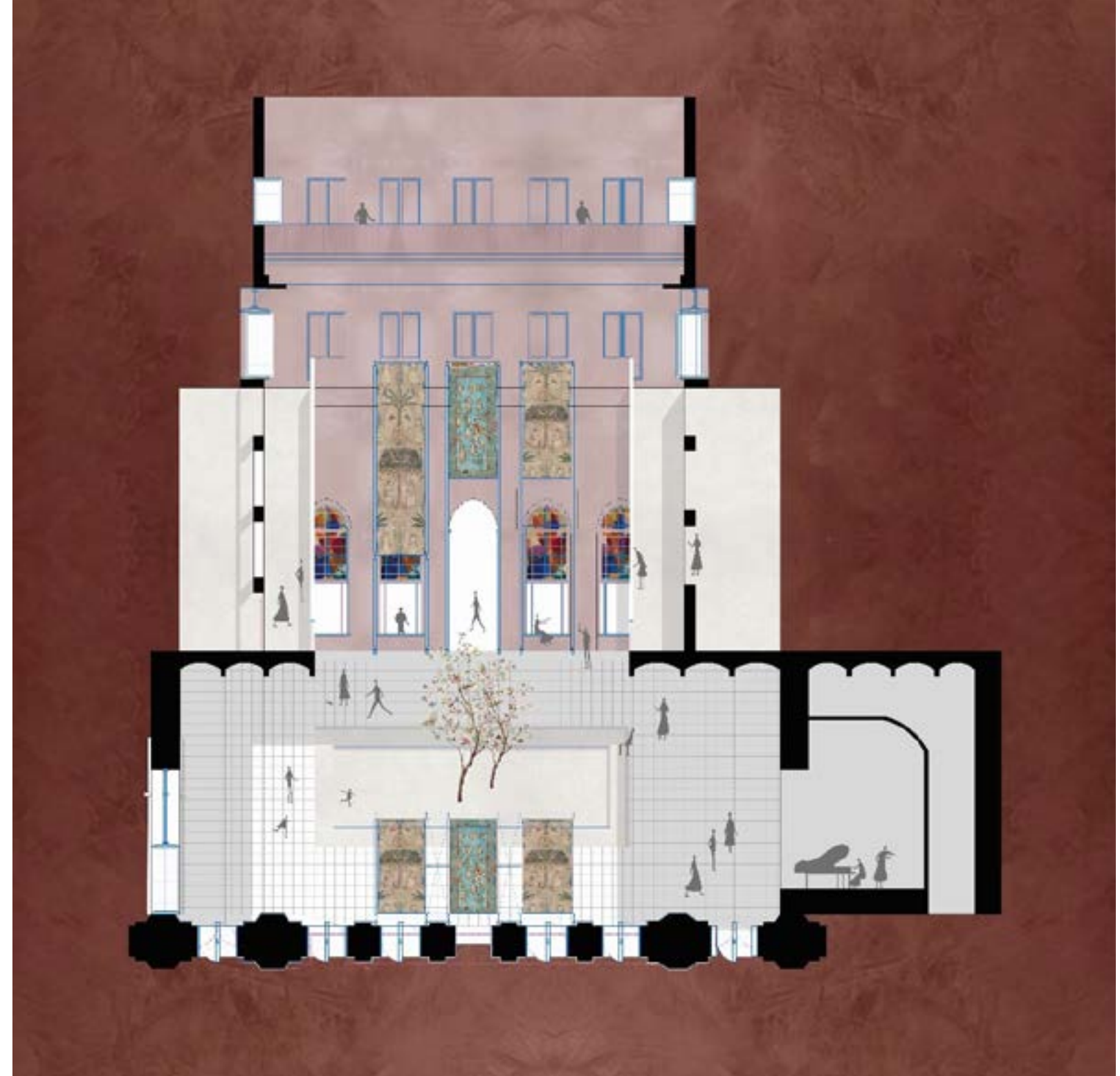
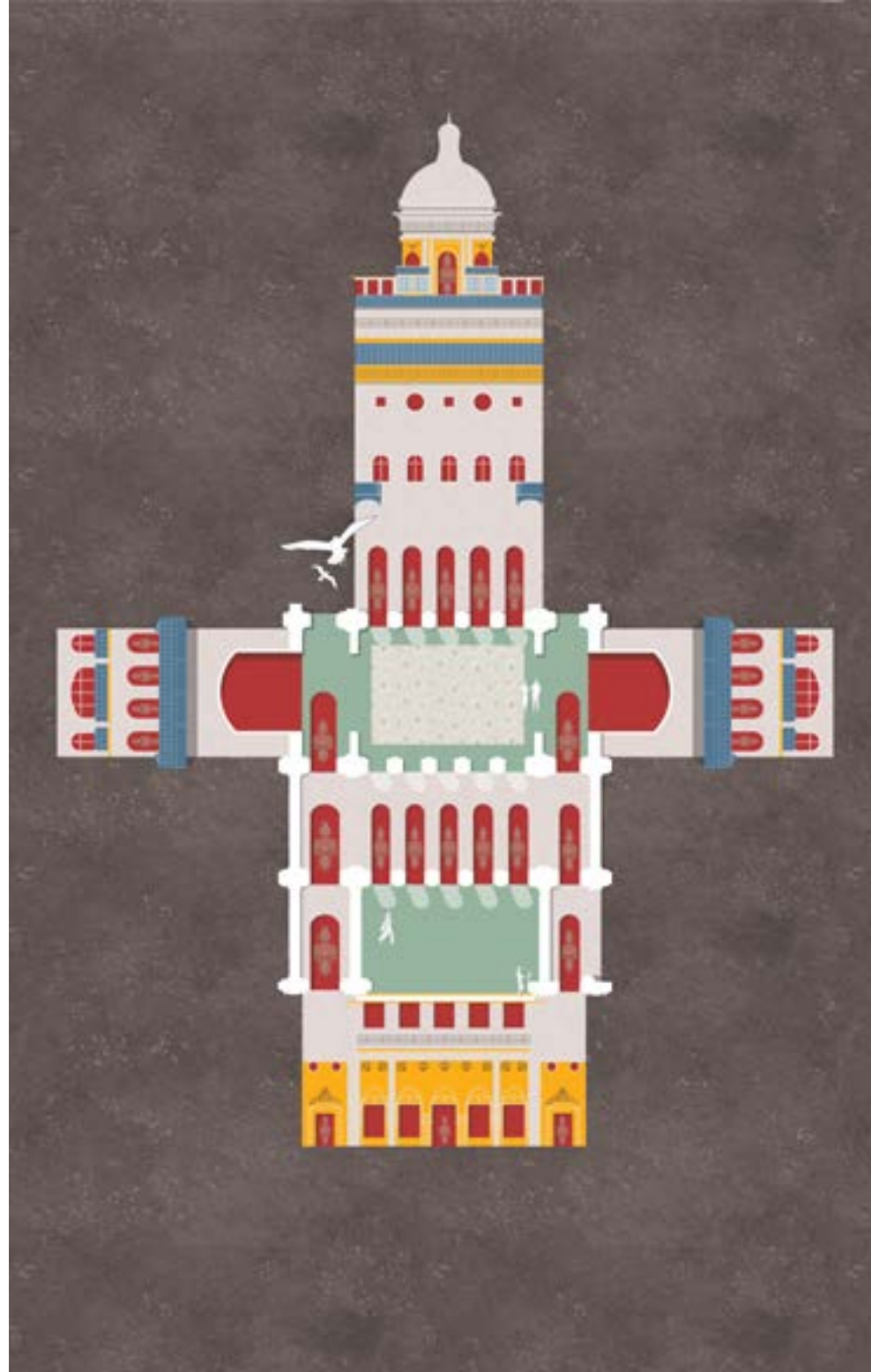
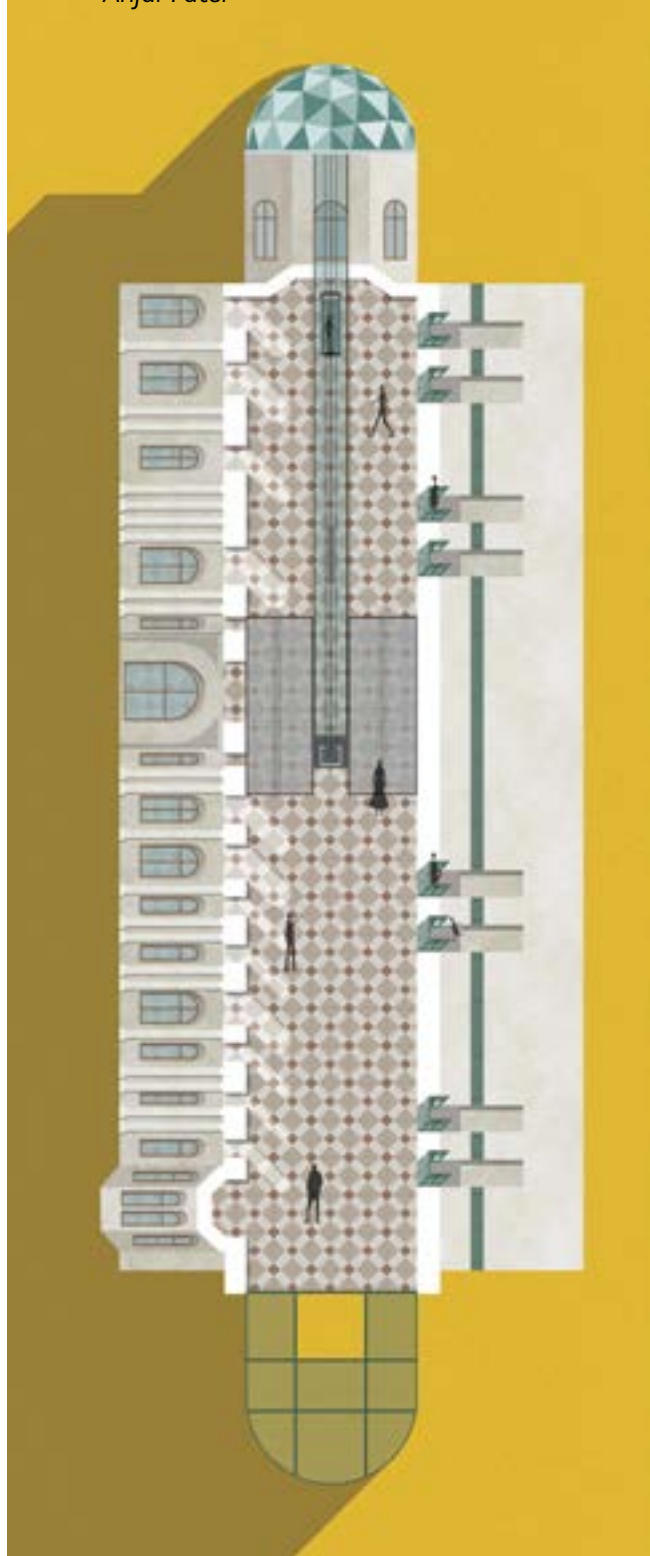
Reinforcement of the Ruin | ASI (Indian Government)

Foundation

Planimetry Drawings
Cronocaos and Care M24
Student Intervention

Student Credit

Prachi Nishar, Sanika P, Sai Uphad
Anjal Patel



Foundation

Planimetry Drawings
Cronoacos and Care M24
Student Intervention

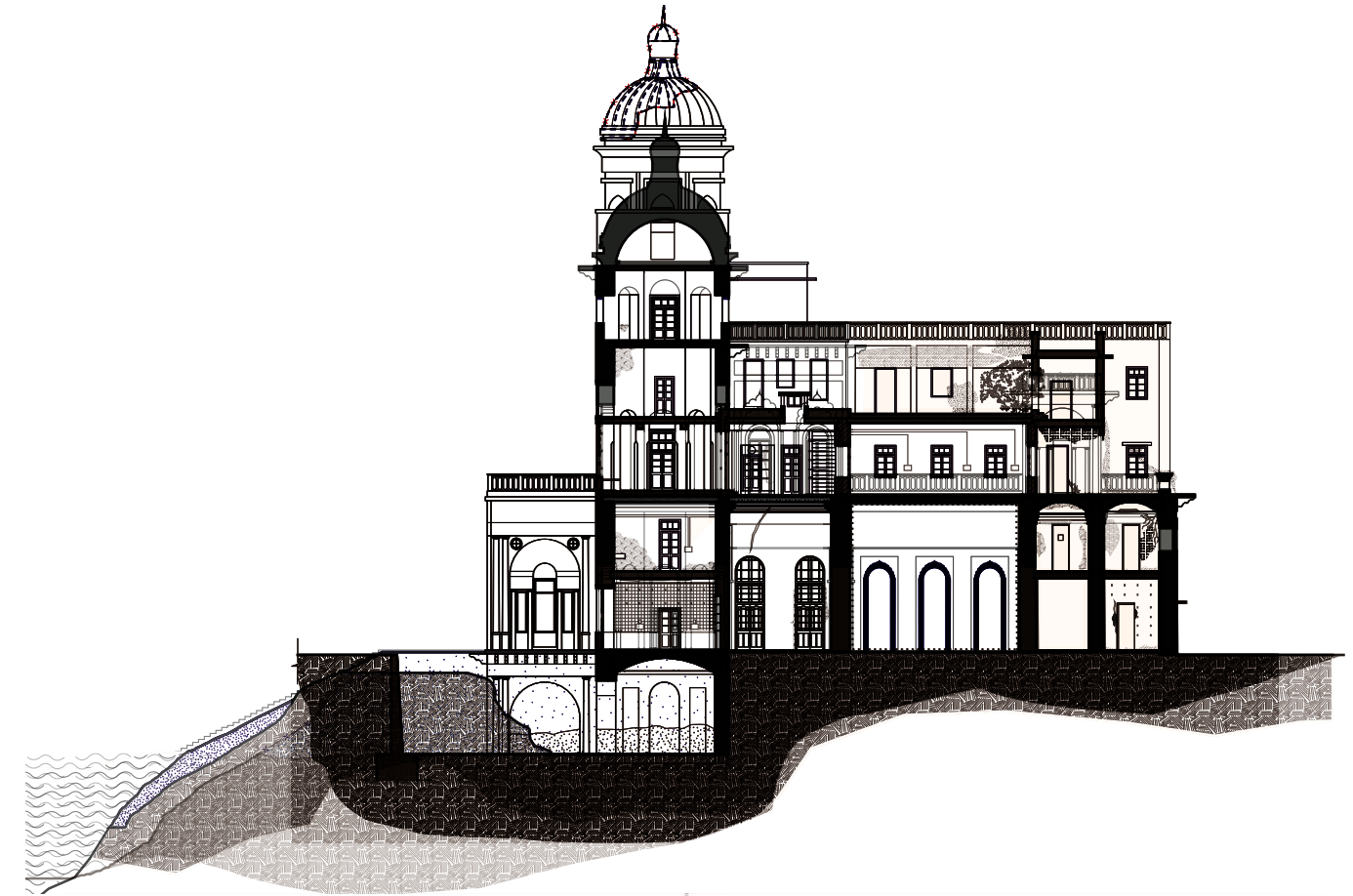
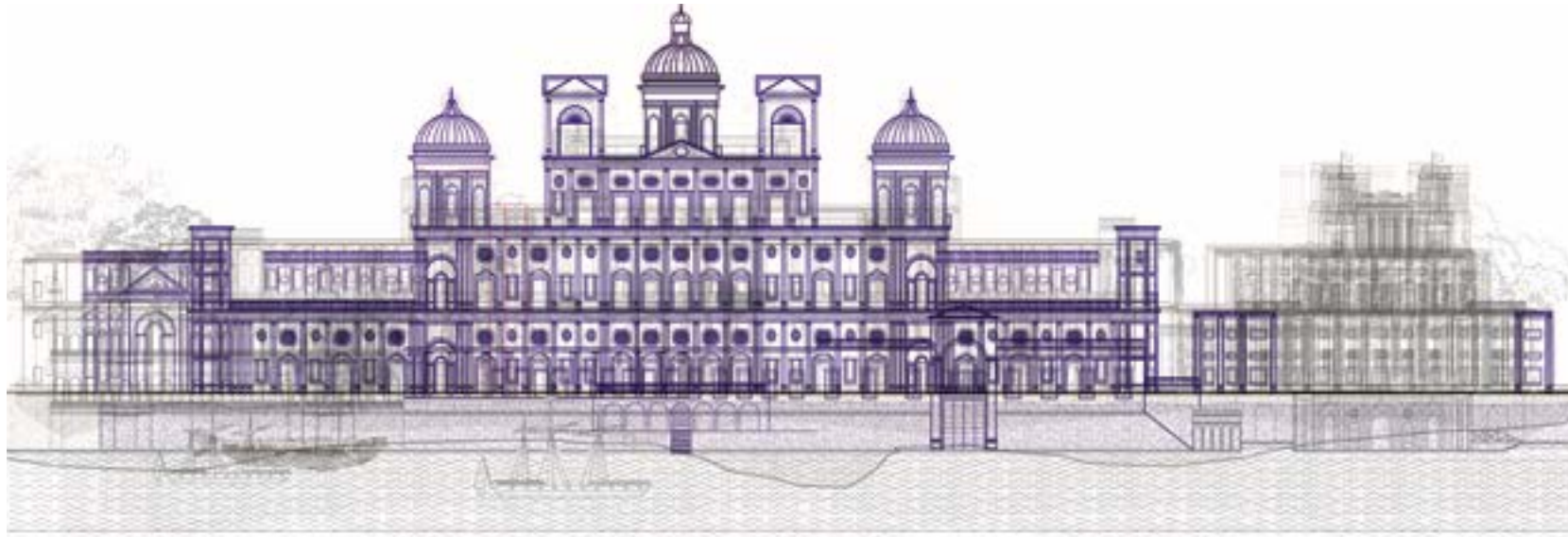
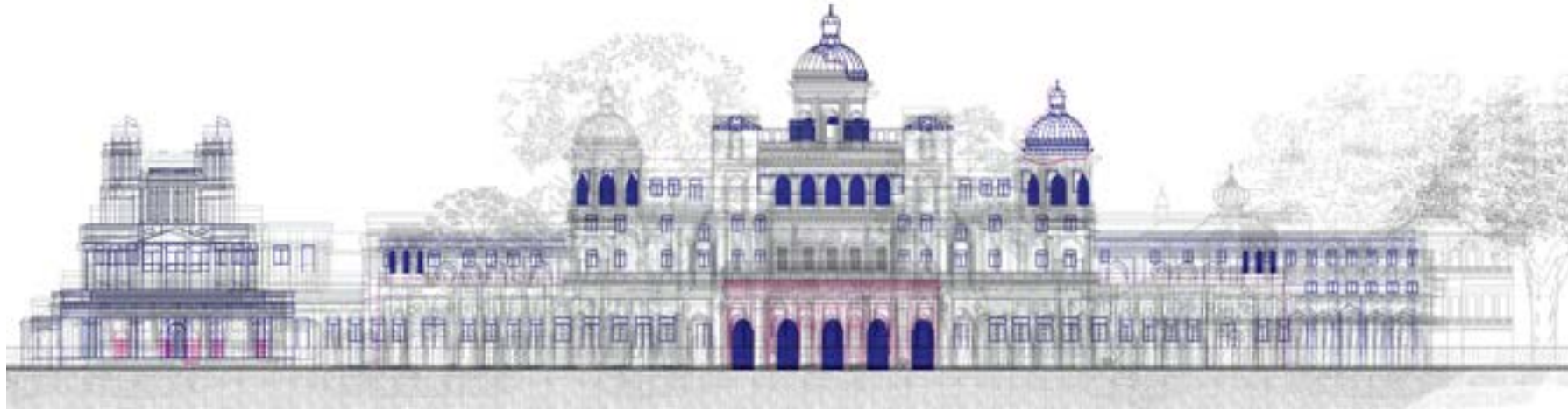
Student Credit

Prachi Nishar, Sanika P, Sai Uphad
Ankuri Patel, Harini Ganesh, Shaishav
Ankita Khalate, Suhani Shah, Sonal Shah



Foundation

Palimpsest Chhattar Manzil, Lucknow
Cronocaos and Care M24
Group Work



Conservation Approach to Modernist Housing
















Mapping Aspirations | CIDCO Housing Mumbai

Spring Semester 2025

Group Work



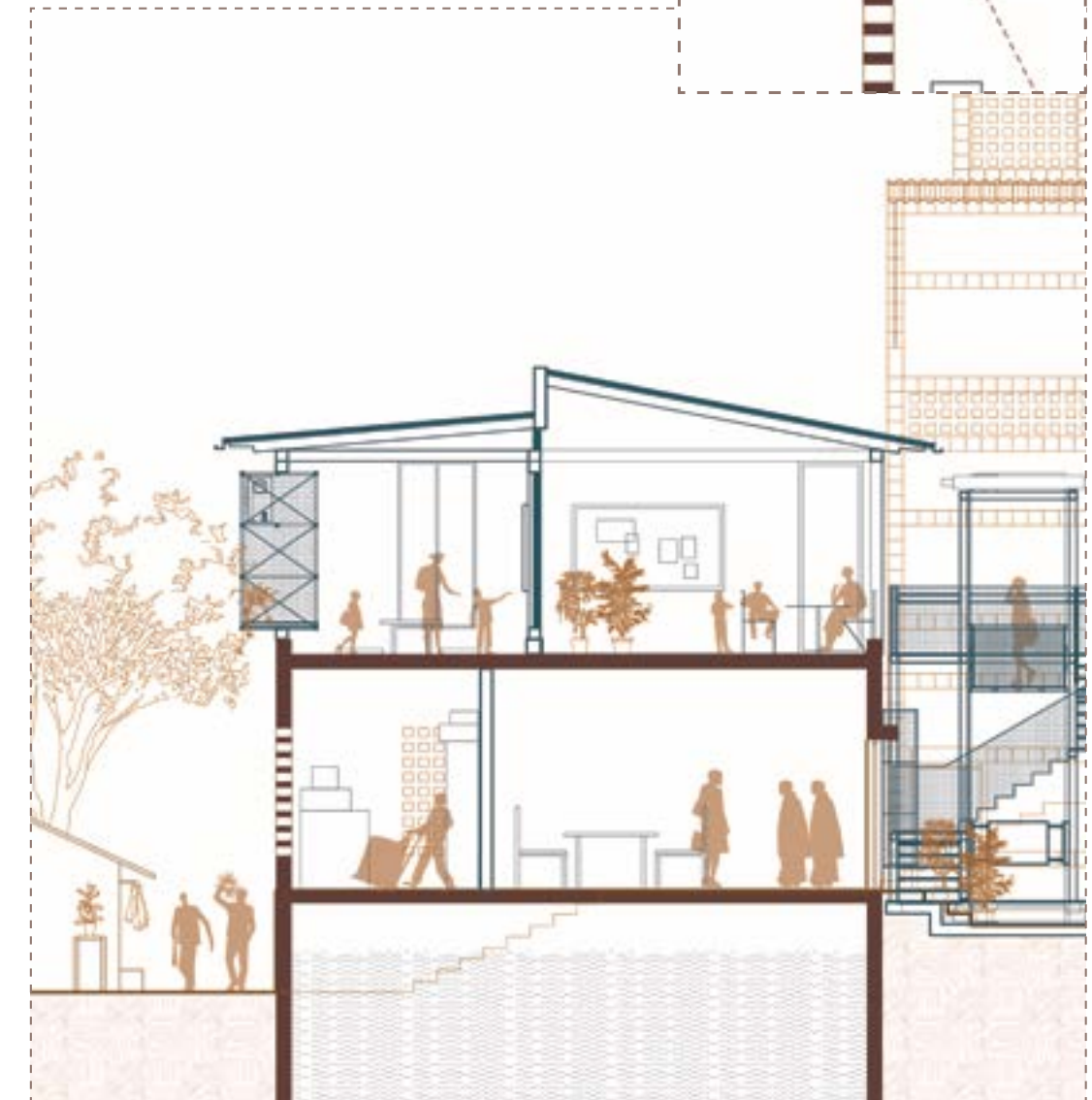
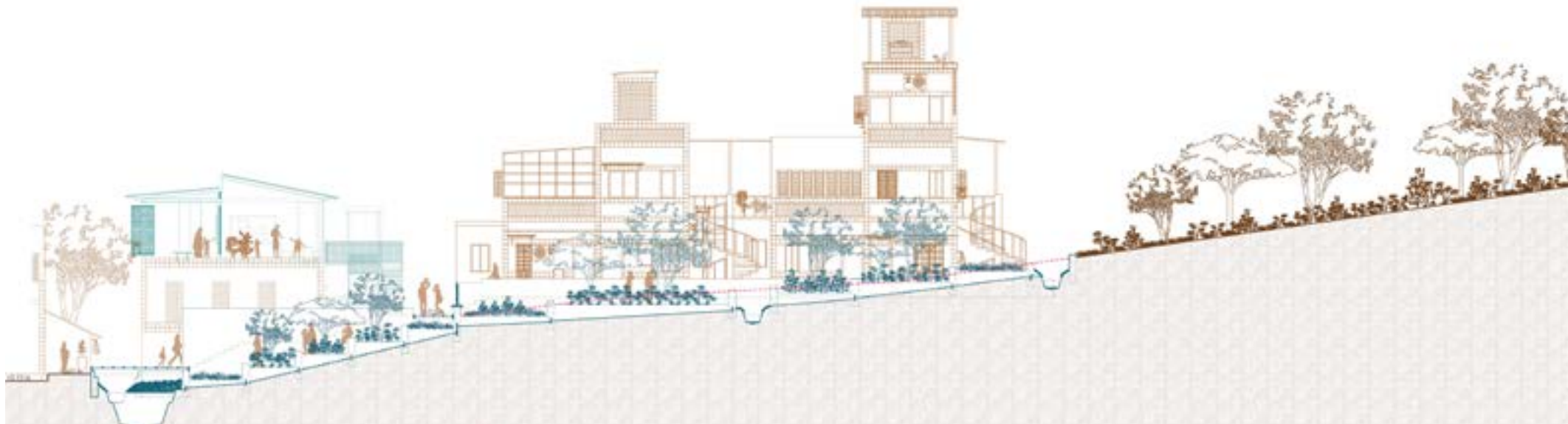
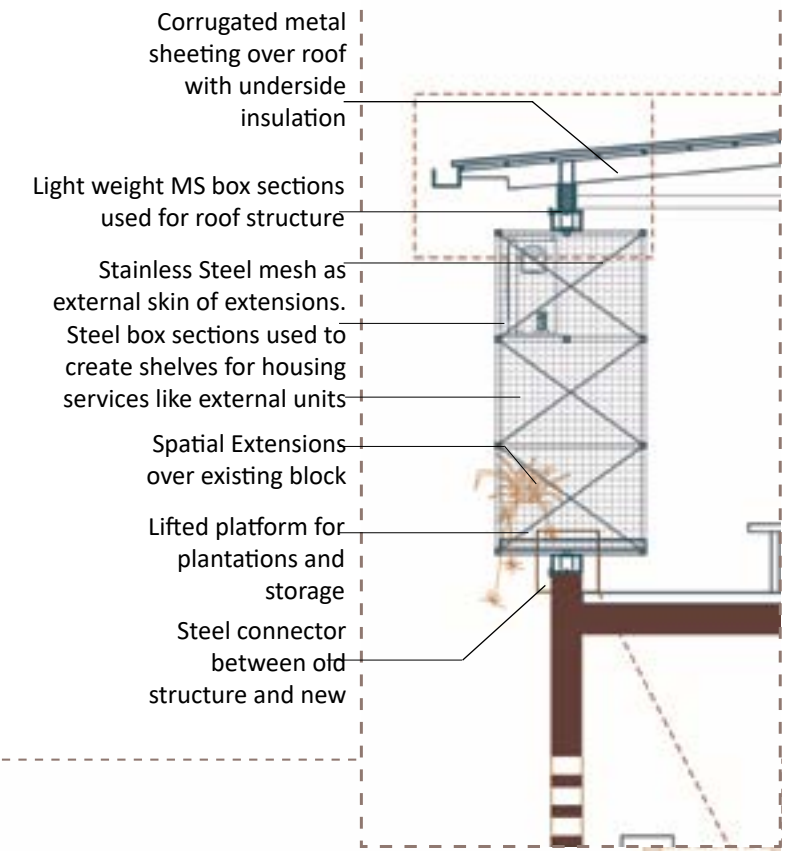
LEGEND

- | | | | | | | | | | | | | | | |
|---|---|---|--|---|---|---|---|---|---|---|---|---|---|---|
|  |  |  |  |  |  |  |  |  |  |  |  |  |  |  |
| Existing Built form | Spatial Retrofits | Utility Retrofits | Services Retrofits | Retrofits for Ventilation | Retrofit Walls | Earth | Concrete | Stone Masonry | Cracks | Algae | Spalling | Chipping | Dampness | Plant growth |

Conservation Approach to Modernist Housing

CIDCO Housing Mumbai
Spring Semester 2025
Student Work

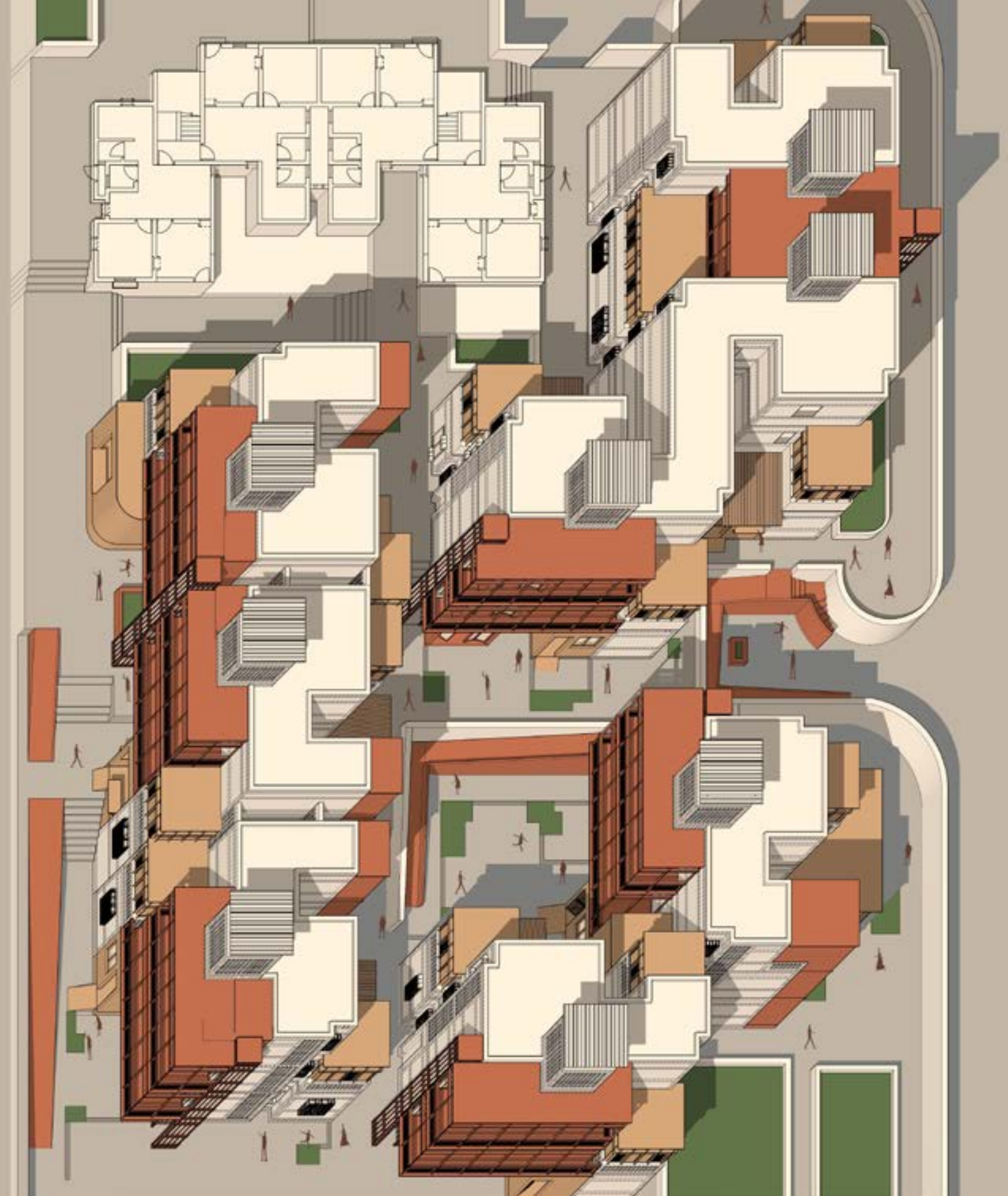
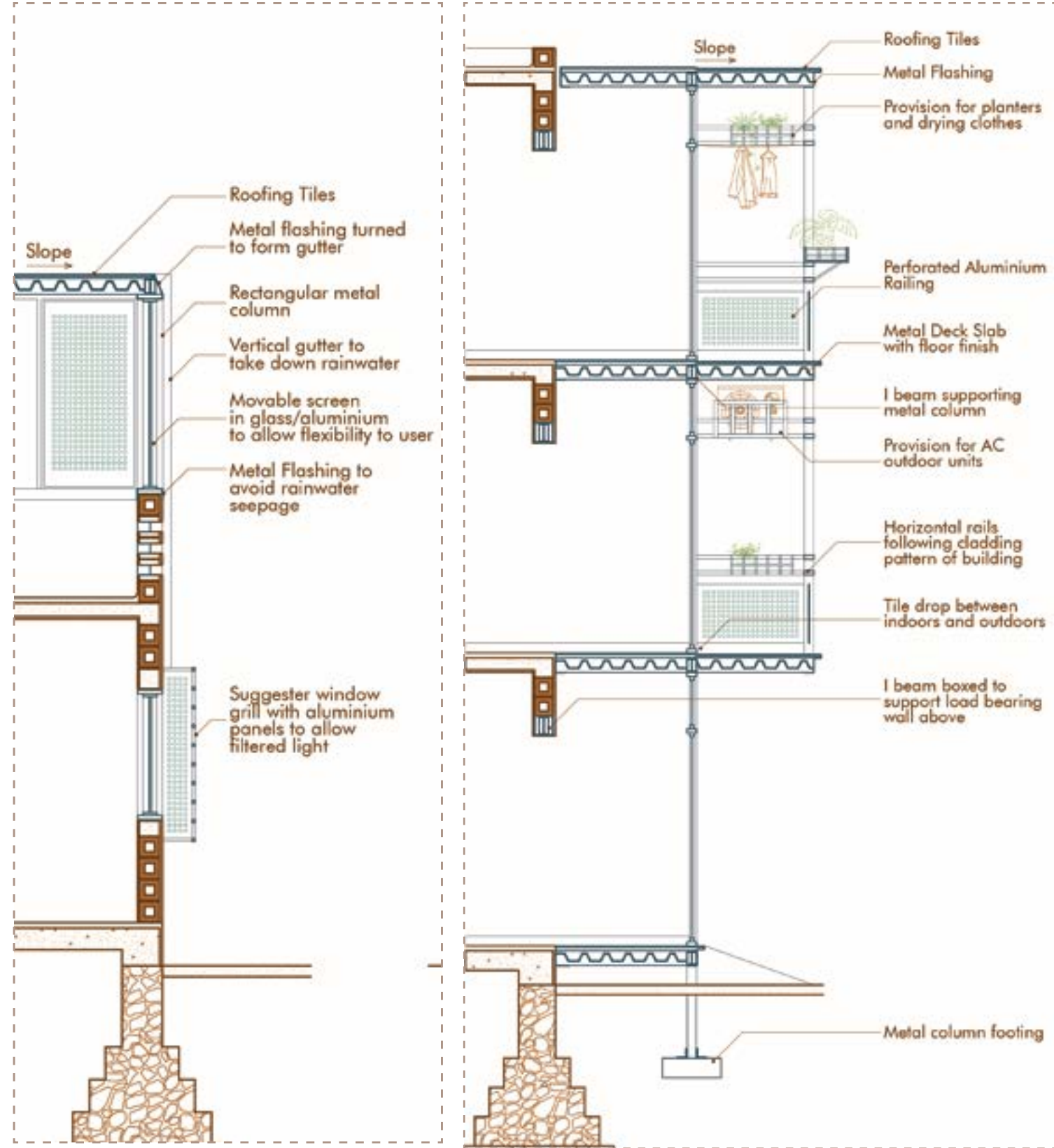
Anjal Patel



Conservation Approach to Modernist Housing

CIDCO Housing Mumbai
Spring Semester 2025
Student Work

Ankita Khalate



Reparative Operations

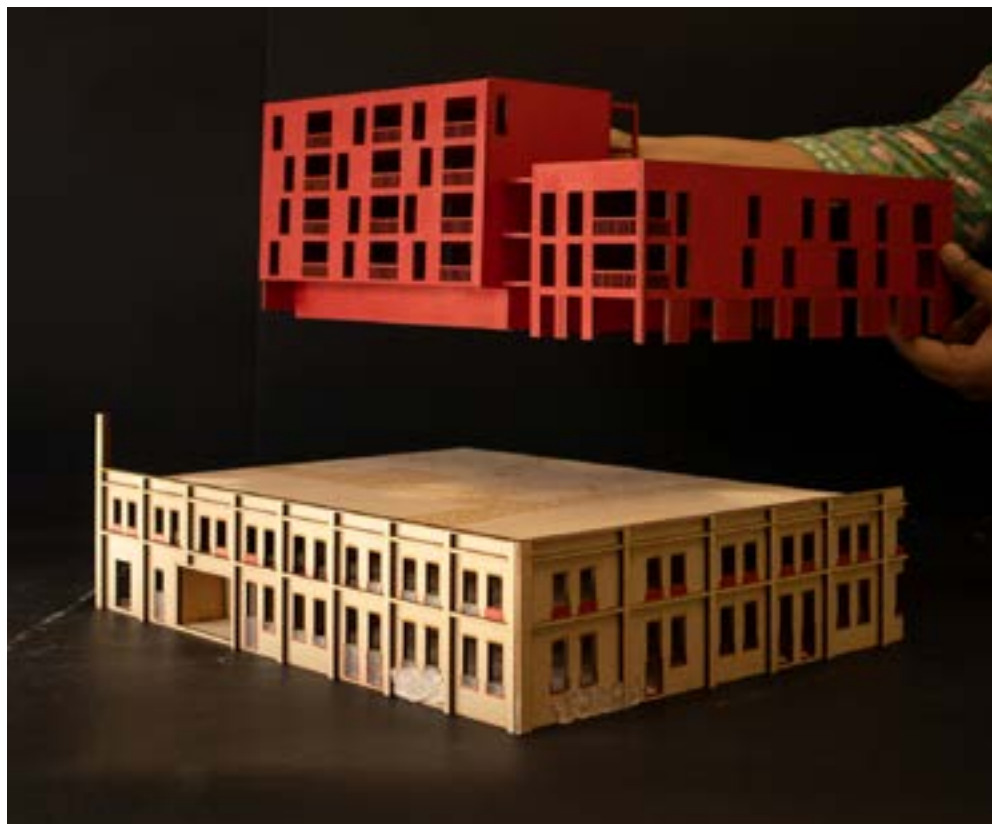
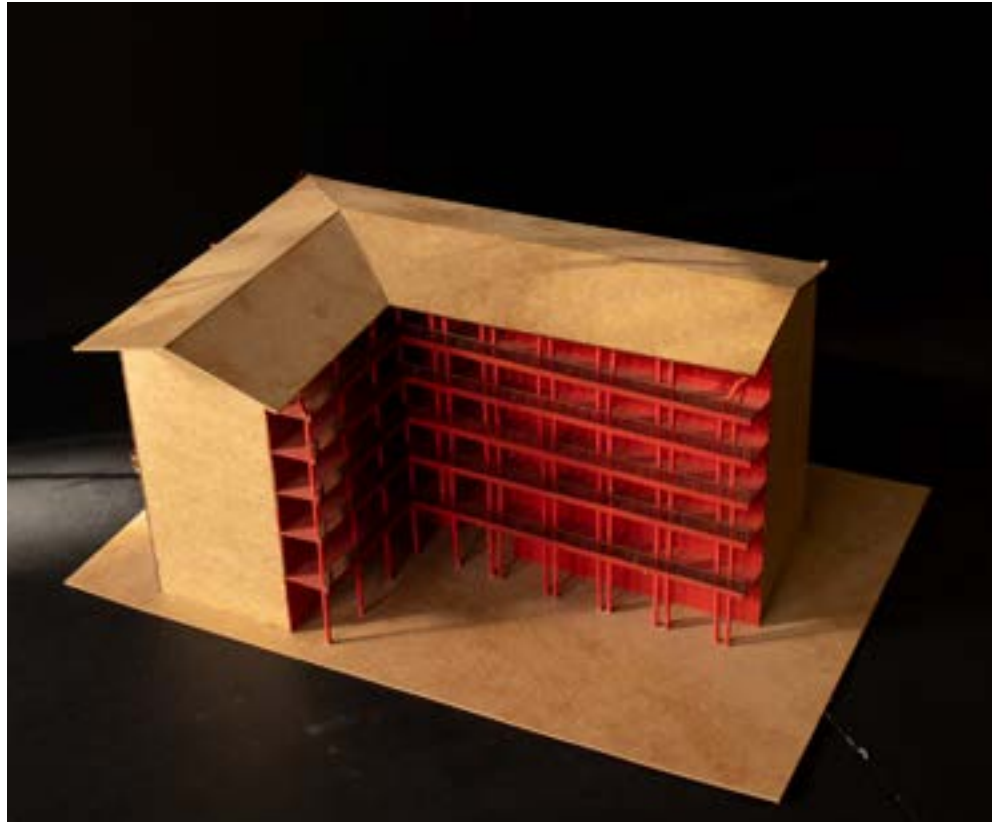
Conservation Approach to Modernist Housing
Spring Semester 2025
Student Intervention

Student Credit
Srinedhi V
Suhani Shah
Anjal Patel
Archana Lakshmanan



Precedent Studies through Models

Conservation Approach to Modernist Housing
Spring Semester 2025



Precedent Studies through Models

Modernist Building Systems | Innate City
Spring Semester 2025



Alternative Futures

Monsoon Semester 2025
Student Interventions

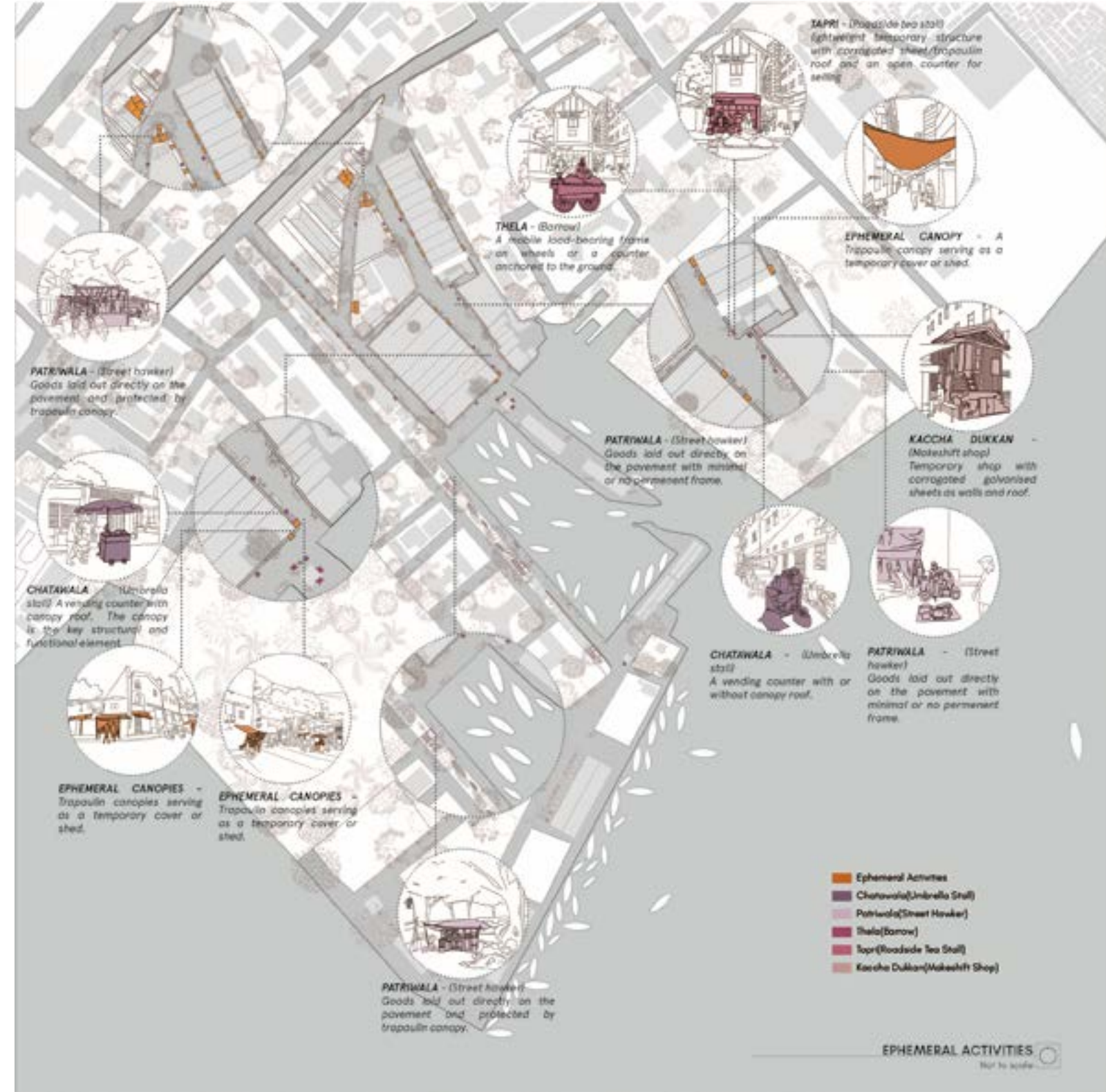
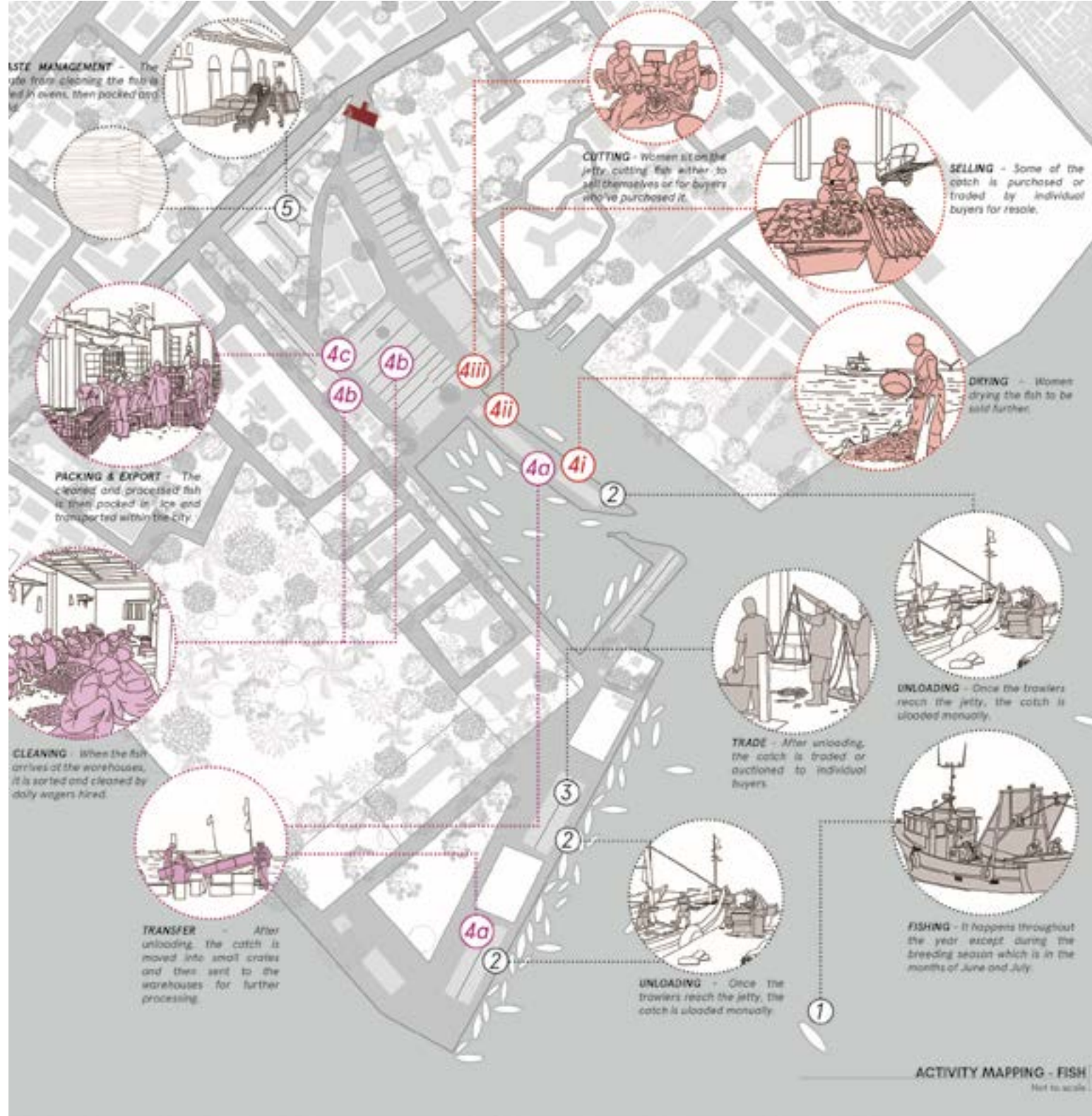
Student Credit
Sanika Puntambekar



Alternative Futures

Monsoon Semester 2025

Group Work



Alternative Futures

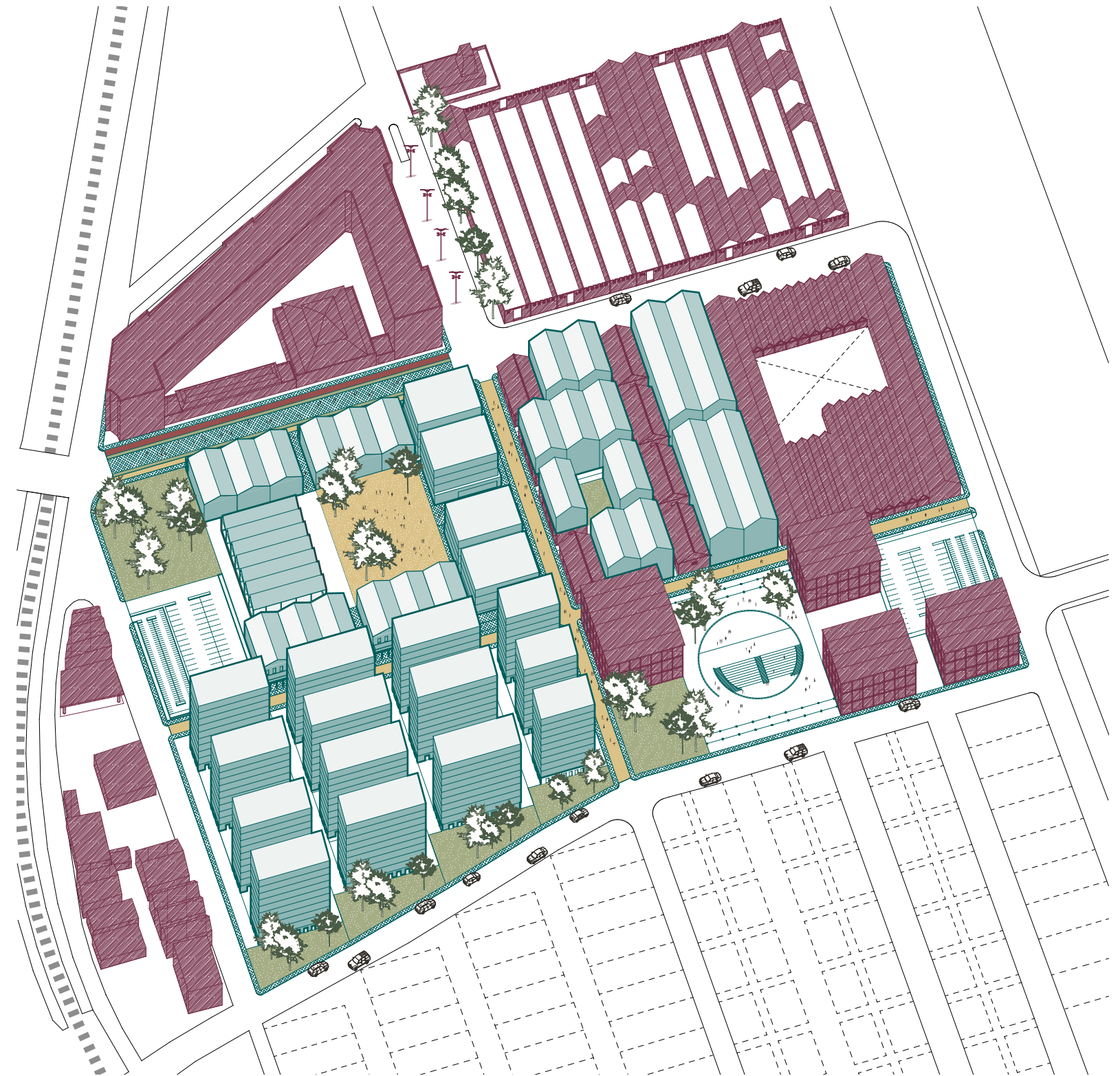
Monsoon Semester 2025

Student Interventions

Student Credit

Suhani Shah

Harini Ganesh



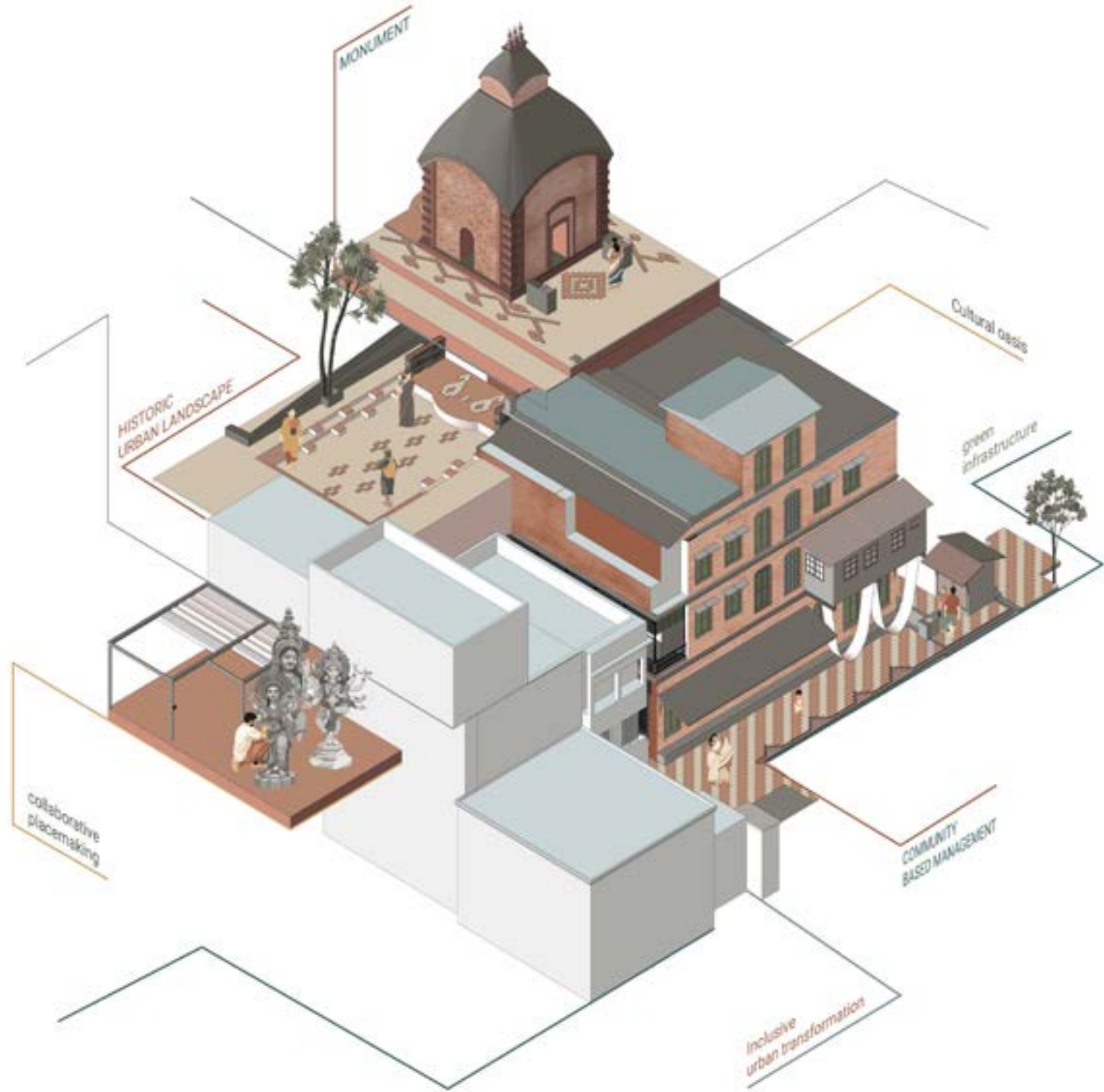
Contemporizing Historical Precinct of Sovabazar Kolkata

Monsoon Semester 2024

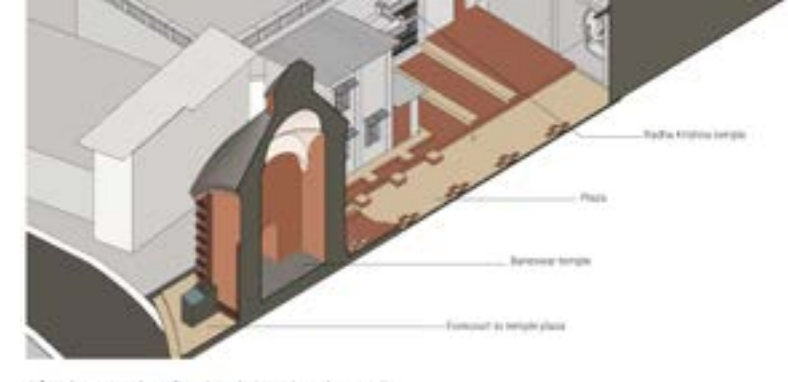
Student Interventions

Student Credit

Gayatri S



Before intervention: Sectional view through temple



After intervention: Sectional view through temple



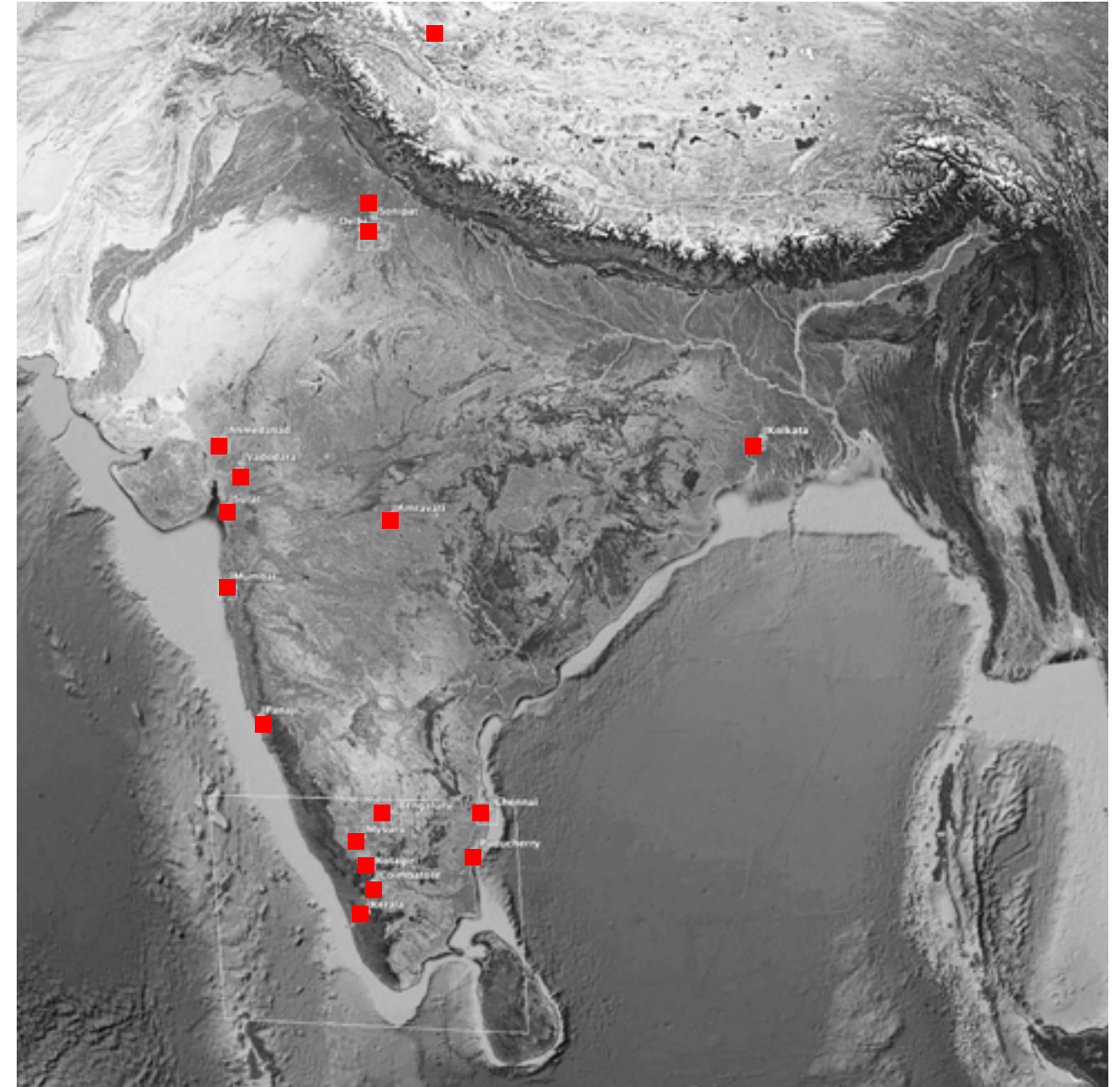
Conservation Architecture Practices in the country

Abha Narayan Lambah Associates, Mumbai.
Abhikram, Ahmedabad
Aga Khan Foundation
Aishwarya Tipnis Architects, Delhi
Alleya and Associates, Kolkata
Archaeological Survey of India
Ashish & Poonam Trambadia, Ahmedabad
Benny Kuriakose Architects, Kerala
Beyond Built, Delhi
Center for Heritage Conservation, CEPT Research and Development Foundation, Ahmedabad
Center for Historic Houses, OP Jindal Global University, Sonapat
Cultural Resource Conservation Initiative (CRCI), New Delhi
Dakshinchitra Volunteers, Mysore
Dharatal, Lucknow
Dharohar, Delhi
DRONAH Foundation, Gurugram
Eugene Pandala (Centre for Sustainable Built & Natural Environment), Kerala
Heritage Synergies India
Indian Cities Heritage Network Foundation (IHCNF), Bengaluru
INTACH, New Delhi
INTACH, Pondichery
Kimaya Architects
Kshetra, Amravati
Manish Chakraborty, Kolkata
MOSAIC, New Delhi
Narendra Denge Associates, Pune
National Centre for Safety of Heritage Structures (NCSHS), IIT Madras
Neeta Subhrajit Das Associates, Kolkata
People for Heritage Concern, Surat
Ravi Gundu Rao Associates, Mysore
Ritambhara (Shashikala Ananth), Kotagiri, TN
RMA Architects, Mumbai
Sathyu Architects, Bangalore
Schedio Architects, Chennai
SDM Architects, Mumbai
Somaya and Kalappa Associates, Mumbai
State Department of Archaeology (Goa)
State Department of Archaeology (Gujarat)
State Department of Archaeology (Maharashtra)
Sthapatya, Jaipur
Studio Verge, Bangalore
Tejaswini Aphale Associates, Pune

MCR Graduates employed at

CEPT University
CHC CEPT
Cuboid Architecture
HCP
Heritage Synergies India (HSI)
Heritage Trust Baroda
Hundredhands
INTACH Bangalore
INTACH Delhi
Kimaya Architects
Nushka
Pai Raikar & Associates
Self Employed
Somaya and Kalappa Consultants
Studio Dishayein
Studio K Architects
TU Delft, The Netherlands

Adaptive Reuse Projects
Architectural Restoration
Architecture Design
Conservation management plan
Curation
Documentation
Environmental Design
Heritage Impact Assesment,
Heritage management plan
Heritage walk curation
Interior Design
Museum Design
Research
Tendering
Urban Conservation
Urban Designers





TEAM

Chinmay Gheware

Fernando Velho

Gurmeet Rai

Jayashree Bardhan

Jigna Desai

Lester Silveira

Neeta Das

Nigar Sheikh

Niyati Naik

Sabrina Khan

Shreyank Khemalpure

Sonal Mithal

Sumesh Modi

Tridip Suhrud



Jinal Taunk
Academic Associate
jinal.taunk@cept.ac.in



Ankita Khalate
Program Ambassador
ankita.khalate@cept.ac.in



Prachi Nishar
Program Ambassador
prachi.nishar@cept.ac.in

@mcr_cept

THANK YOU

